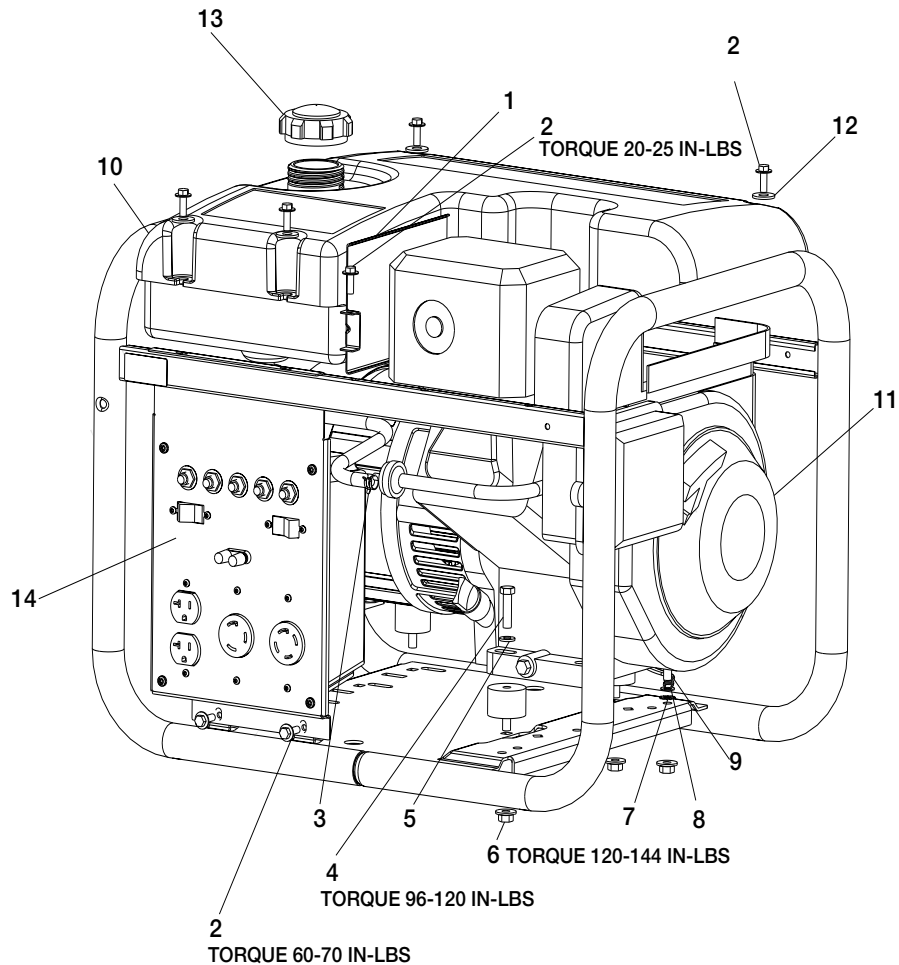
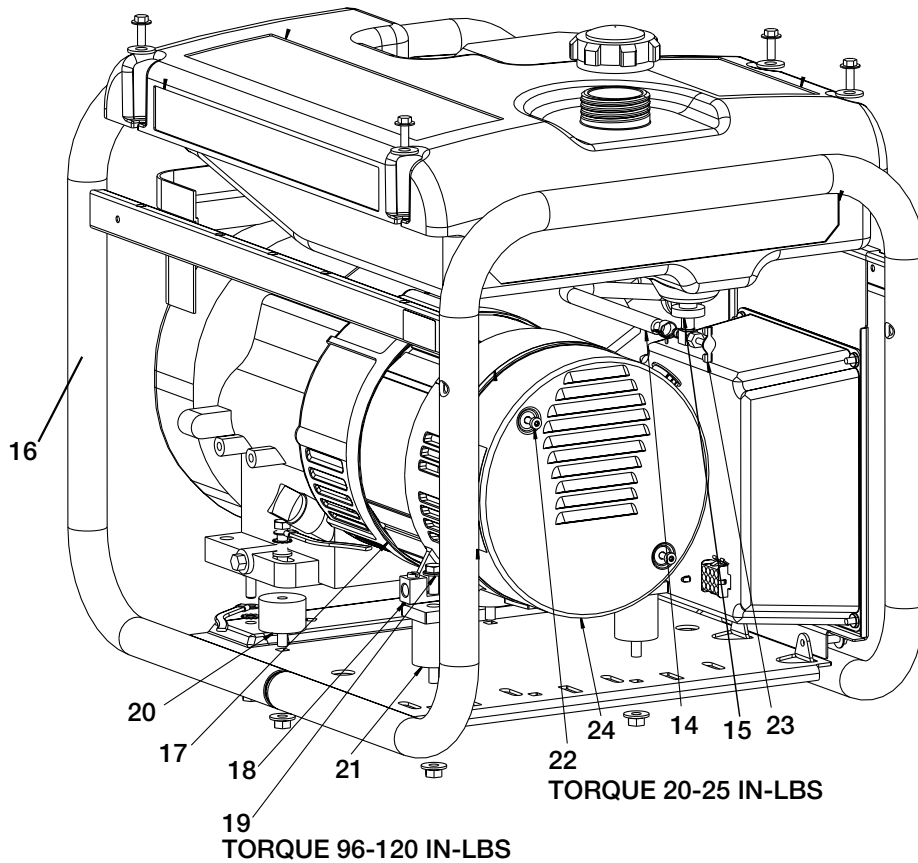


CGBV4000-1



| KEY NO. | DESCRIPTION | PART NUMBER |
|----------------|------------------------------------|--------------------|
| 1 | HEAT SHIELD | GS-0816-1 |
| 2 | SCREW, 1/4-20 x .75 | 91895680 |
| 3 | FUEL CLAMP | GS-0227 |
| 4 | SCREW, 5/16-18 X 1.25 | SSF-605 |
| 5 | WASHER | SSN-60-ZN |
| 6 | NUT, HEX WIZ LOCK | SSF-8150 |
| 7 | WASHER, LOCK | SSN-1619-ZN |
| 8 | GROUND STRAP | GS-0118 |
| 9 | CAP SCREW, 5/16-18 X 3/4 | SS-12-SD |
| 10 | FUEL TANK (4 GALLON) | GS-0650-1 |
| 11 | ENGINE (B7S Model #138432-0158-EI) | - |
| 12 | WASHER, .875 OD .35 ID .083 THK | SSN-632 |
| 13 | FUEL TANK CAP | GS-0443 |
| 14 | PANEL ASSEMBLY | GS-0668 |

CGBV4000 (cont'd)

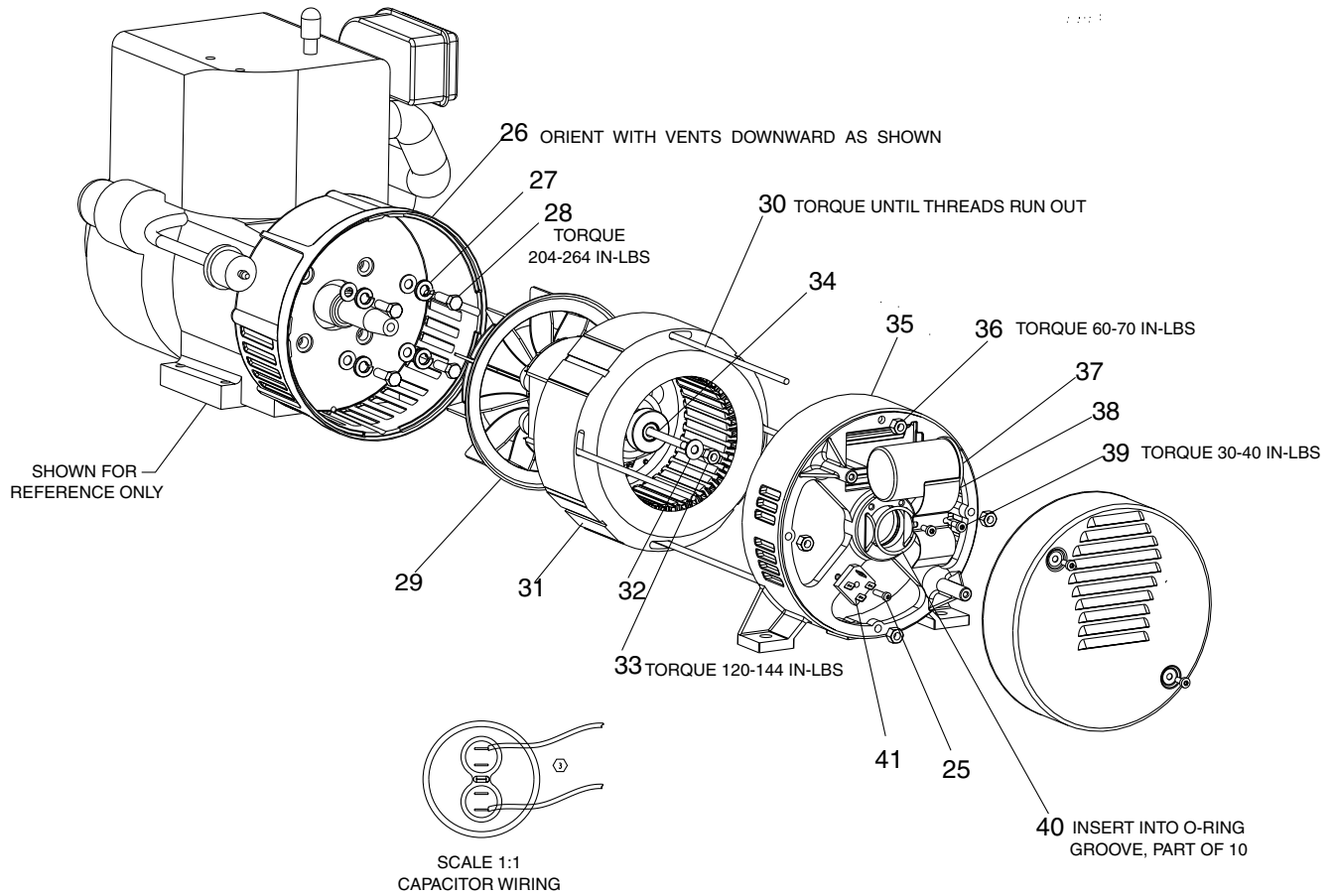


| KEY NO. | DESCRIPTION | PART NUMBER |
|----------------|------------------------------|--------------------|
| 14 | FUEL HOSE | GS-0225 |
| 15 | DRAIN COCK GROMMET | GS-0446 |
| 16 | FRAME ASSEMBLY | GS-0611 |
| 17 | GENERATOR ASSEMBLY | GS-0672 |
| 18 | GROUND LUG | GS-0117 |
| 19 | SCREW, HEX WASHER, UNSLOTTED | SSF-928 |
| 20 | VIBRATION ISOLATOR | GS-0033 |
| 21 | VIBRATION ISOLATOR | GS-0433 |
| 22 | SCREW, 10-24 x 9/16 | SSF-553-1 |
| 23 | FUEL SHUT OFF VALVE | GS-0437 |
| 24 | END COVER | GS-0077 |

Not Shown

| | |
|----------------|------------------|
| MG-GENMAN-F | Operators Manual |
| GEN-CGBV4000-1 | Parts Manual |
| GS-0674 | Engine Manual |

CGBV4000-1 (cont'd)



**KEY
NO.**

DESCRIPTION

PART NUMBER

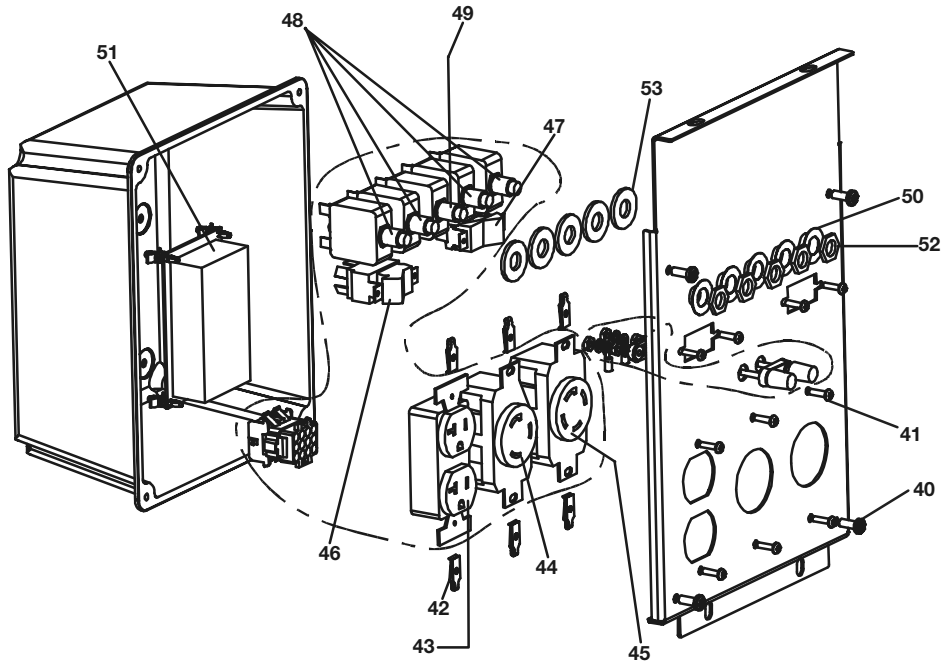
| | | |
|----|-----------------------------|------------|
| 25 | SCREW, 10-24 X .75 T25 TORX | SSF-3158-1 |
| 26 | DRIVE END ADAPTER | GS-0076 |
| 27 | LOCK WASHER 3/8 | SSN-619 |
| 28 | CAP SCREW, 3/8-16 X 1 | SSF-577 |
| 29 | ROTOR ASSEMBLY | GS-0588 |
| 30 | STATOR THRU BOLT | GS-0110 |
| 31 | STATOR ASSEMBLY | GS-0673 |
| 32 | WASHER 11/16 OD X 11/32 | SS-6506-CD |
| 33 | NUT, 5/16-24 | SSF-576 |
| 34 | ROTOR THRU BOLT | GS-0091-1 |
| 35 | BEARING SUPPORT | GS-0861 |
| 36 | HEX NUT 1/4-20 | SSF-575 |
| 37 | CAPACITOR | GS-0748 |
| 38 | CAPACITOR BRACKET | GS-0595 |
| 39 | SCREW 10-32 | SSF-553-1 |
| 40 | O-RING | GS-0862 |
| 41 | RECTIFIER | GS-0767 |

ITEMS NOT SHOWN

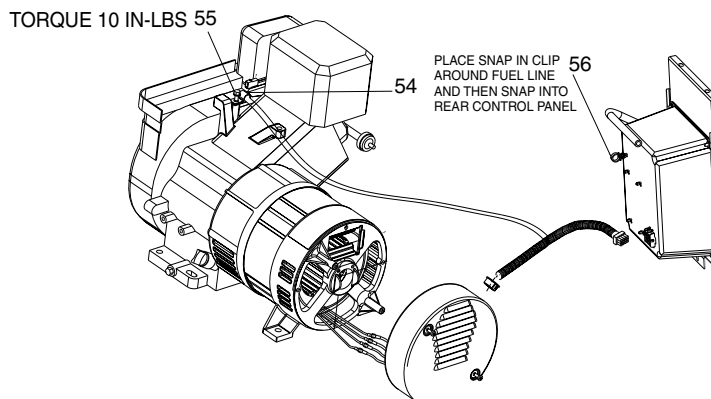
*(Diode(s) — GS-0082

*Refer to page 4 in the Generator Repair Section for further diode information.

CGBV4000-1 (cont'd)



| KEY NO. | DESCRIPTION | PART NUMBER |
|----------------|---------------------------------------|--------------------|
| 40 | SCREW, 10-9 x .50 PLASTITE | SSF-3156 |
| 41 | SCREW, #6-32 X .5 TORX | SSF-583 |
| 42 | SPEED NUT #6-32 | SSF-584 |
| 43 | RECEPTACLE, 120V/20A DUBLEX | GS-0019 |
| 44 | RECEPTACLE, 3 PRONG TWISTLOCK | GS-0480 |
| 45 | RECEPTACLE, 4 PRONG TWISTLOCK | GS-0445 |
| 46 | FULL POWER SWITCH | GS-0045 |
| 47 | IDLE CONTROL SWITCH | GS-0679 |
| 48 | 15A CIRCUIT BREAKER | GS-0024 |
| 49 | 10A CIRCUIT BREAKER | GS-0681 |
| 50 | SWITCH FACE PLATE | GS-0207 |
| 51 | CIRCUIT BOARD FOR IDLE CONTROL SWITCH | GS-0663 |
| 52 | JAM NUT 7/16 | SSF-595 |
| 53 | WASHER 3/8 | SS-1525-CD |



| KEY NO. | DESCRIPTION | PART NUMBER |
|----------------|---------------------|--------------------|
| 54 | CLIP | SSP-510 |
| 55 | SCREW, SELF TAPPING | SSF-981 |
| 56 | SNAP-IN CLIP | GS-0763 |