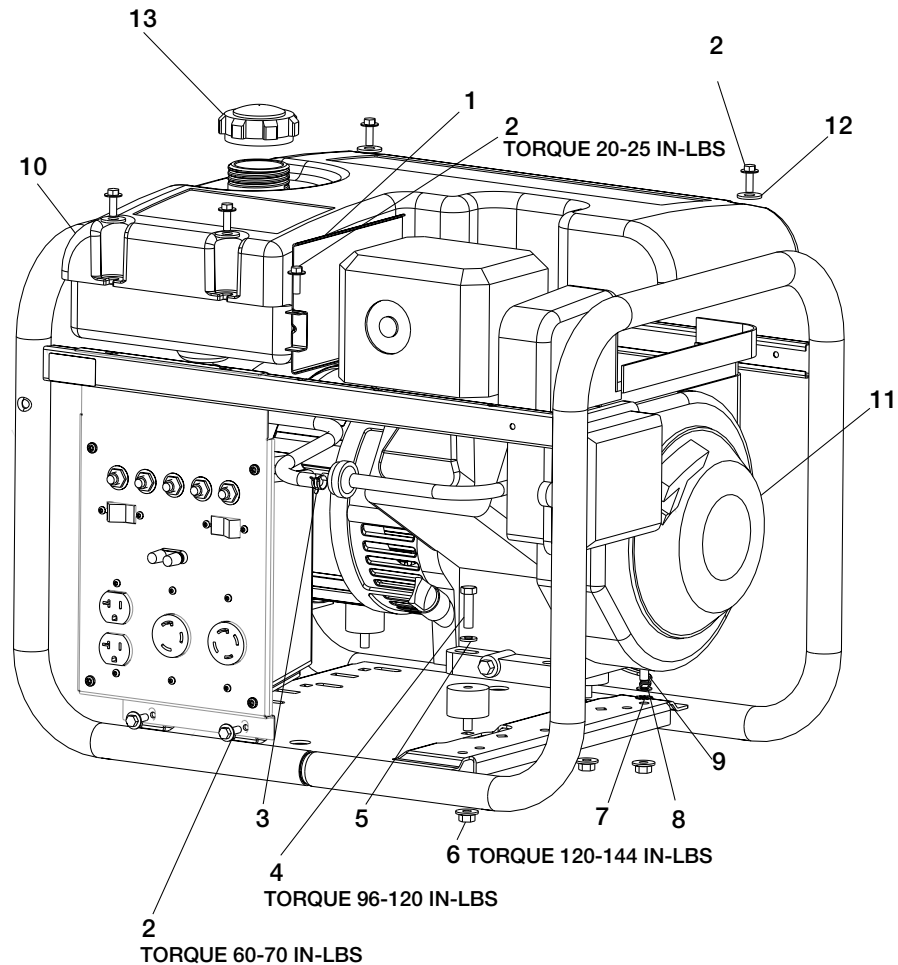
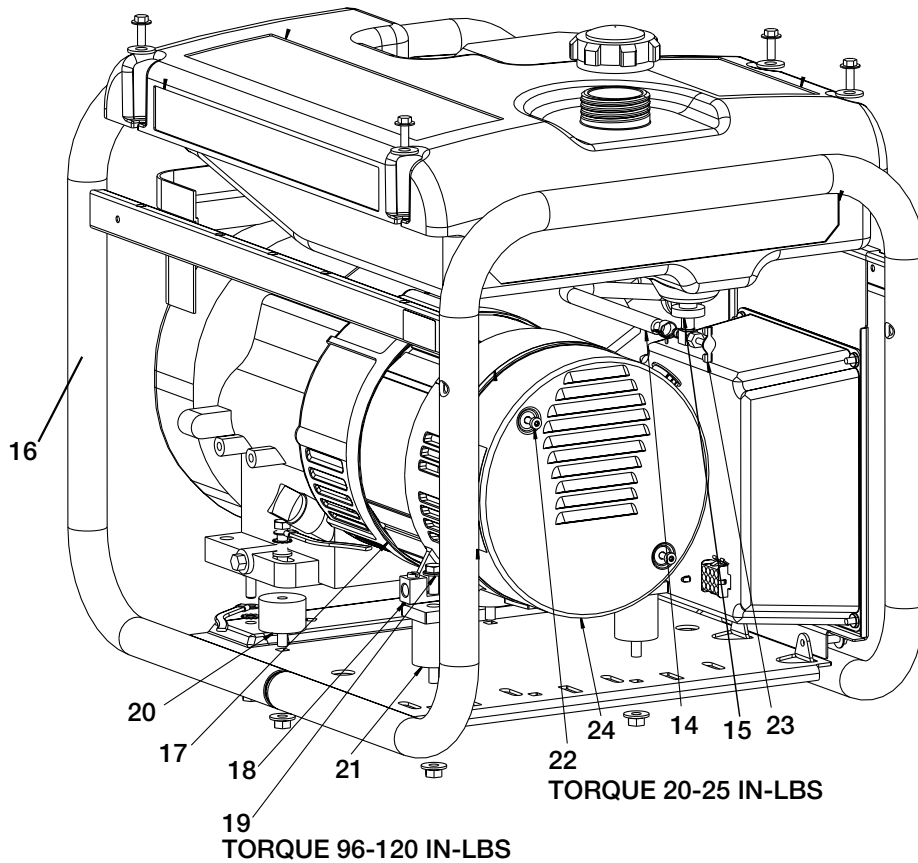


CGBV4000



KEY NO.	DESCRIPTION	PART NUMBER
1	HEAT SHIELD	GS-0816-1
2	SCREW, 1/4-20 x .75	91895680
3	FUEL CLAMP	GS-0227
4	SCREW, 5/16-18 X 1.25	SSF-605
5	WASHER	SSN-60-ZN
6	NUT, HEX WIZ LOCK	SSF-8150
7	WASHER, LOCK	SSN-1619-ZN
8	GROUND STRAP	GS-0118
9	CAP SCREW, 5/16-18 X 3/4	SS-12-SD
10	FUEL TANK (4 GALLON)	GS-0650-1
11	ENGINE (B7S Model #138432-0158-EI)	-
12	WASHER, .875 OD .35 ID .083 THK	SSN-632
13	FUEL TANK CAP	GS-0443

CGBV4000 (cont'd)

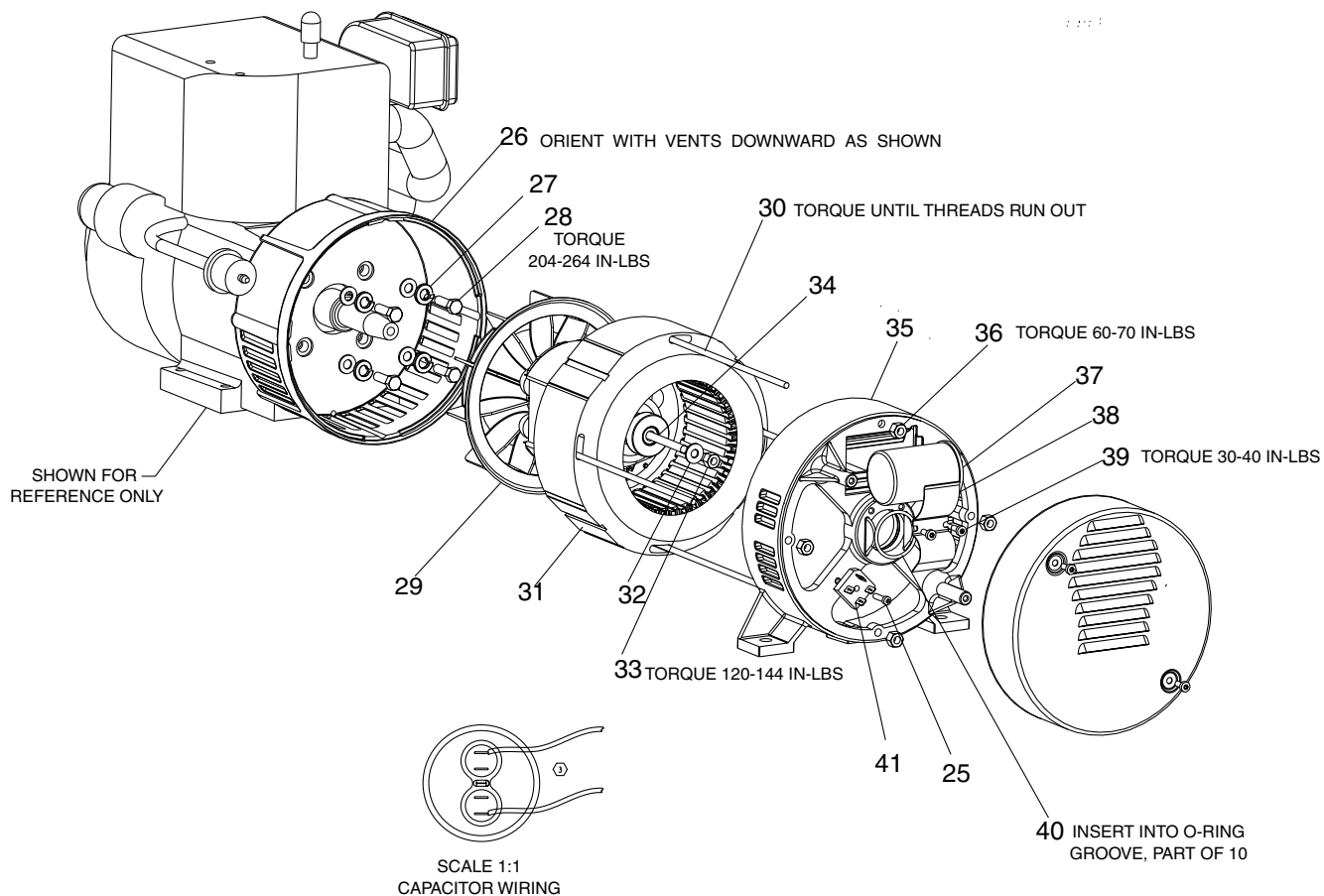


KEY NO.	DESCRIPTION	PART NUMBER
14	FUEL HOSE	GS-0225
15	DRAIN COCK GROMMET	GS-0446
16	FRAME ASSEMBLY	GS-0611
17	GENERATOR ASSEMBLY	GS-0842
18	GROUND LUG	GS-0117
19	SCREW, HEX WASHER, UNSLOTTED	SSF-928
20	VIBRATION ISOLATOR	GS-0033
21	VIBRATION ISOLATOR	GS-0433
22	SCREW, 10-24 x 9/16	SSF-553-1
23	DRAIN COCK	GS-0437
24	END COVER	GS-0077

Not Shown

MG-GENMAN-F GEN-CGBV4000 GS-0674	Operators Manual Parts Manual Engine Manual
--	---

CGBV4000 (cont'd)



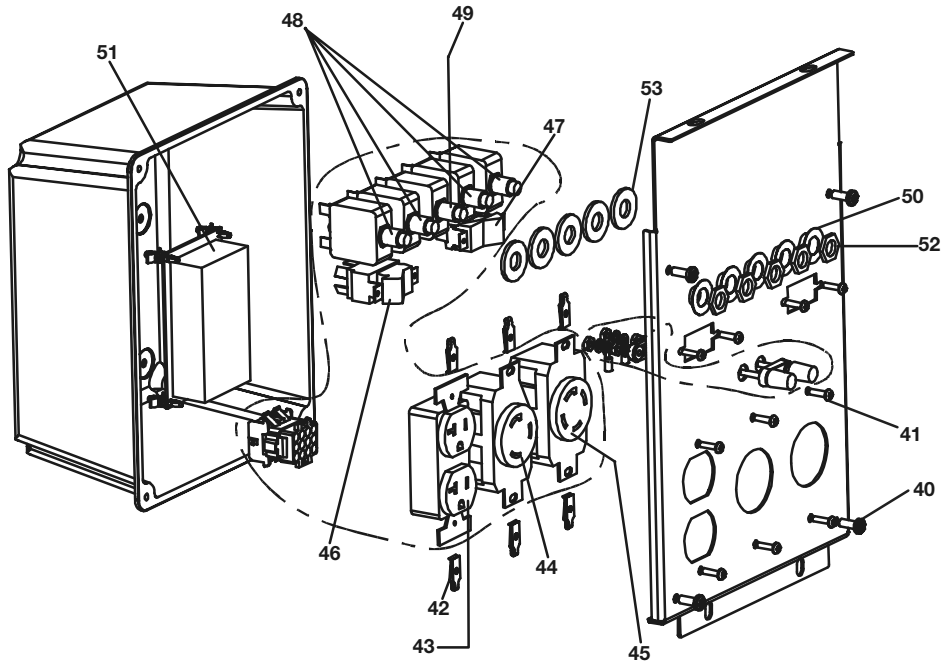
KEY NO.	DESCRIPTION	PART NUMBER
25	SCREW, 10-24 X .75 T25 TORX	SSF-3158-1
26	DRIVE END ADAPTER	GS-0076
27	LOCK WASHER 3/8	SSN-619
28	CAP SCREW, 3/8-16 X 1	SSF-577
29	ROTOR ASSEMBLY	GS-0588
30	STATOR THRU BOLT	GS-0110
31	STATOR ASSEMBLY	GS-0673
32	WASHER 11/16 OD X 11/32	SS-6506-CD
33	NUT, 5/16-24	SSF-576
34	ROTOR THRU BOLT	GS-0091-1
35	BEARING SUPPORT	GS-0861
36	HEX NUT 1/4-20	SSF-575
37	CAPACITOR	GS-0748
38	CAPACITOR BRACKET	GS-0595
39	SCREW 10-32	SSF-553-1
40	O-RING	GS-0862
41	RECTIFIER	GS-0767

ITEMS NOT SHOWN

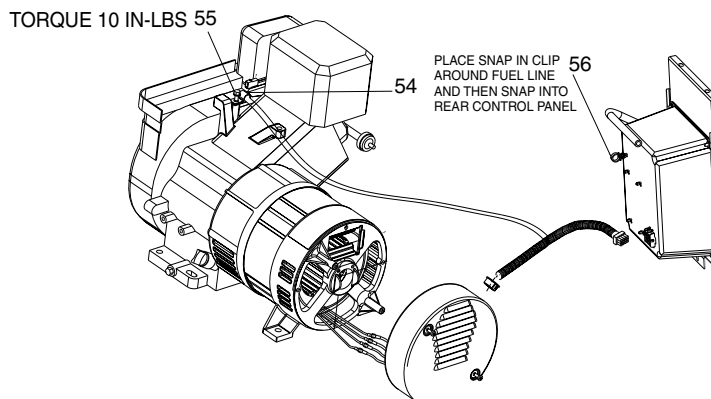
*(Diode(s) — GS-0082

*Refer to page 4 in the Generator Repair Section for further diode information.

CGBV4000 (cont'd)



KEY NO.	DESCRIPTION	PART NUMBER
40	SCREW, 10-9 x .50 PLASTITE	SSF-3156
41	SCREW, #6-32 X .5 TORX	SSF-583
42	SPEED NUT #6-32	SSF-584
43	RECEPTACLE, 120V/20A DUBLEX	GS-0019
44	RECEPTACLE, 3 PRONG TWISTLOCK	GS-0480
45	RECEPTACLE, 4 PRONG TWISTLOCK	GS-0445
46	FULL POWER SWITCH	GS-0045
47	IDLE CONTROL SWITCH	GS-0679
48	15A CIRCUIT BREAKER	GS-0024
49	10A CIRCUIT BREAKER	GS-0681
50	SWITCH FACE PLATE	GS-0207
51	CIRCUIT BOARD FOR IDLE CONTROL SWITCH	GS-0663
52	JAM NUT 7/16	SSF-595
53	WASHER 3/8	SS-1525-CD



KEY NO.	DESCRIPTION	PART NUMBER
54	CLIP	SSP-510
55	SCREW, SELF TAPPING	SSF-981
56	SNAP-IN CLIP	GS-0763