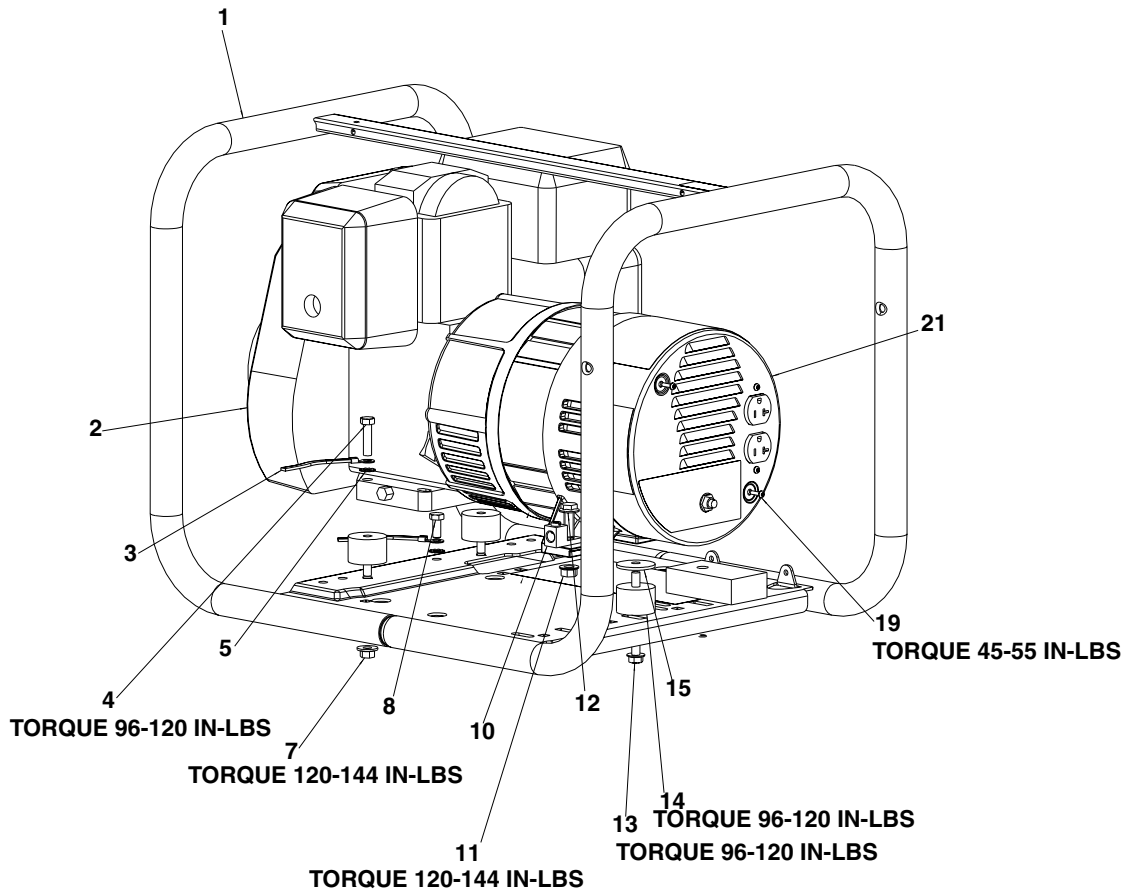


CH250



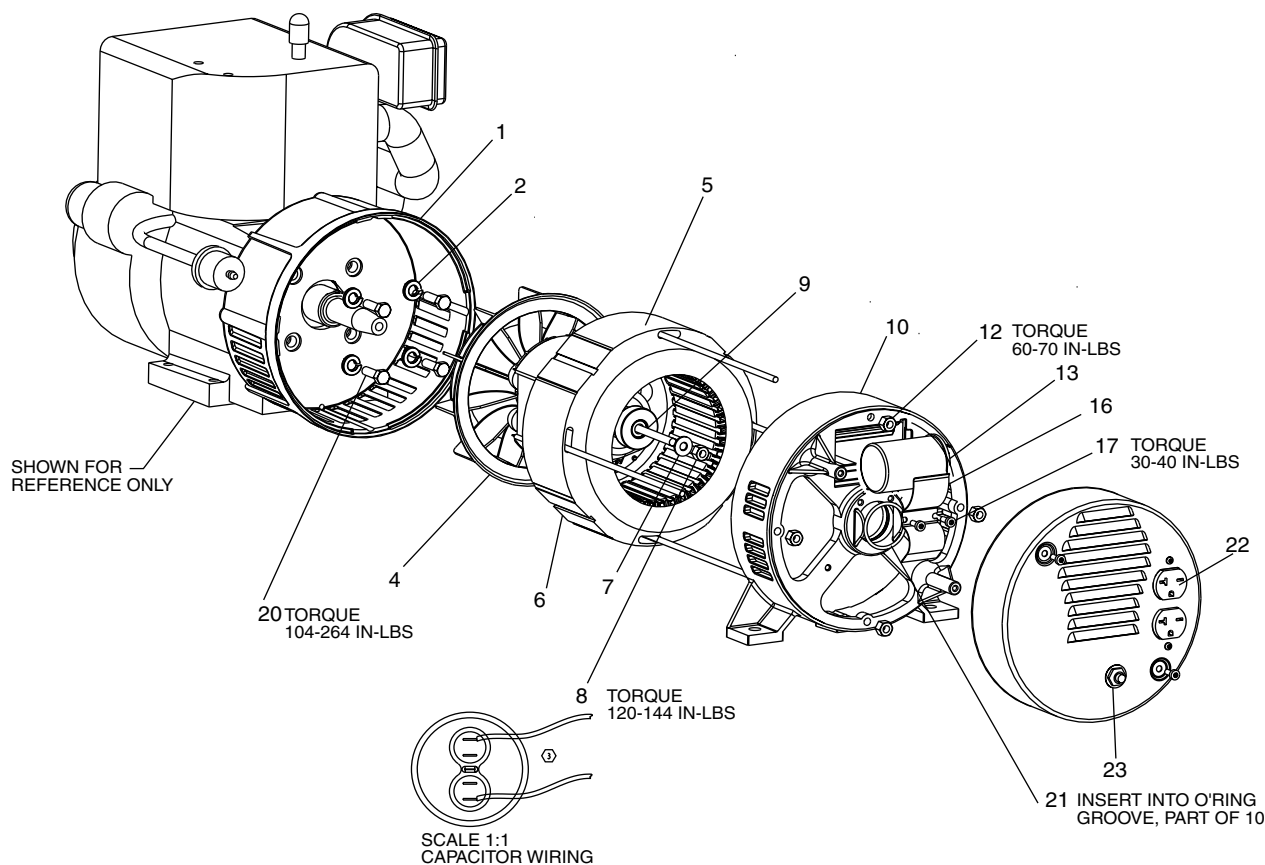
**KEY
NO.**

DESCRIPTION

PART NUMBER

1	Z-D21489	ASSEMBLY FRAME
2	-----	ENGINE (Model #GC160VHA)
3	GS-0118	STRAP GROUND
4	SSF-605	SCREW HEX CAP 5/16-18 X 1
5	SSN-1619-ZN	WASHER LOCK EXTERNAL TOOTH
7	SSF-8150	NUT HEX WIZ LOCK FLANGE
8	SS-12-CD	SCREW CAP 5/16-18 X 3/4
10	GS-0117	LUG GROUND
11	SSF-8111-ZN	NUT LOCK 3/8-16 WHIZ LOCK
12	SSF-3140-ZN	SCREW 3/8-16X1 HEX FLANGE
13	SSF-549	SCREW 5/16-18X.50 HEX WIZ
14	GS-0033	ISOLATOR VIBRATION 1.5OD
15	SSN-1014-ZN	WASHER .339/.344 ID 1 1/2
19	SSF-553-1	SCREW 10-24 X 9/16
21	D21488	ASSY ENDCOVER

CH250 (cont'd)



KEY NO.	DESCRIPTION	PART NUMBER
1	GS-0075	ADAPTOR DRIVE END
2	SS-1503-CD	WASHER LOCK
4	Z-D20261	ASSEMBLY ROTOR
5	GS-0415	STATOR THRU BOLT
6	Z-D20264	ASSEMBLY STATOR
7	SS-6506-CD	WASHER FLAT 11/16 OD X 11
8	SSF-576	NUT 5/16-24 HEX W/KEPS
9	GS-0661	ROTOR THRU BOLT
10	Z-GS-0861	BEARING SUPPORT
12	SSF-575	NUT 1/4"-20 HEX W/KEPS
13	GS-0873	CAPACITOR
16	GS-0595	BRACKET CAPACITOR
17	SSF-553-1	SCREW 10-24 X 9/16
20	SSF-616-ZN	SCREW HEXCAP 5/16-24 X 1
21	GS-0862	O-RING ROTOR BEARING
22	GS-0019	RECEPTACLE, 120V/20A
23	D21508	CIRCUIT BREAKER 20A

Not Shown

D21494	Operators Manual
D21487	Parts Manual
D21534	Engine Manual