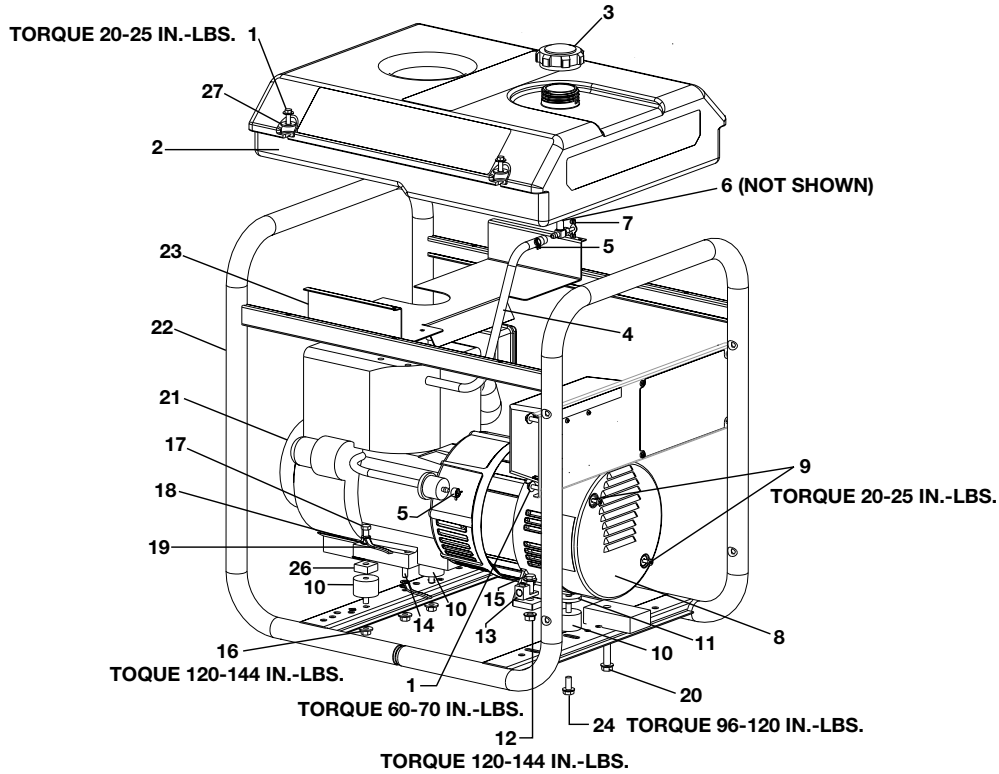


DGT5010-1



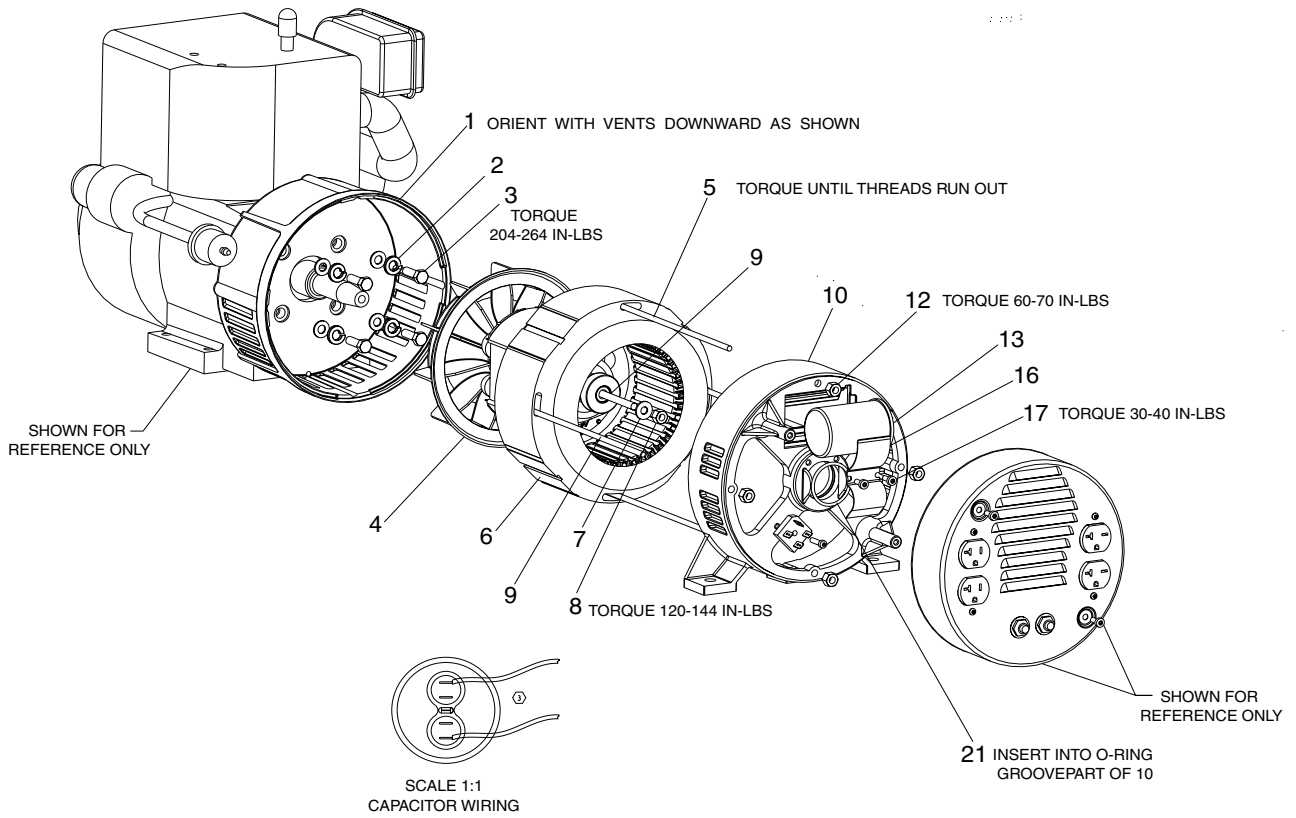
KEY NO.

DESCRIPTION

PART NUMBER

KEY NO.	DESCRIPTION	PART NUMBER
1	FUEL TANK SCREWS	91895680
2	FUEL TANK	GS-0795
3	FUEL CAP	GS-0443
4	FUEL HOSE	GS-0225
5	FUEL LINE CLAMP	GS-0227
6	DRAINCOCK GROMMET	GS-0446
7	TANK DRAINCOCK	GS-0437
8	ENDCOVER	GS-0077
9	SCREW #10-24 x 9/16	SSF-553-1
10	ISOLATOR	GS-0033
11	WASHER 3/8	SSN-1014-ZN
12	LOCK NUT 3/8-16	SSF-8111-ZN
13	GROUND LUG	GS-0117
14	SCREW 5/16-18 x 3/4	SS-12-CD
15	SCREW 3/8-16 x 1	SSF-3140-ZN
16	LOCK NUT 5/16-18	SSF-8150
17	SCREW, HEX HEAD 5/16-18	SSF-999-1
18	LOCK WASHER	SSN-1619-ZN
19	GROUND STRAP	GS-0118
20	HEX SCREW 3/8-16X2.5	SSF-628
21	ENGINE (model #HM100-159409P)	-
22	FRAME ASSEMBLY	GS-0467
23	HEAT SHIELD	GS-0432-1
24	SCREW 5/16-18 X 3/4	SSF-3152
26	SPACER	GS-0746
27	WASHER .8750D .375 ID .083 THK	SSN-632

DGT5010-1 (cont'd)



KEY NO.

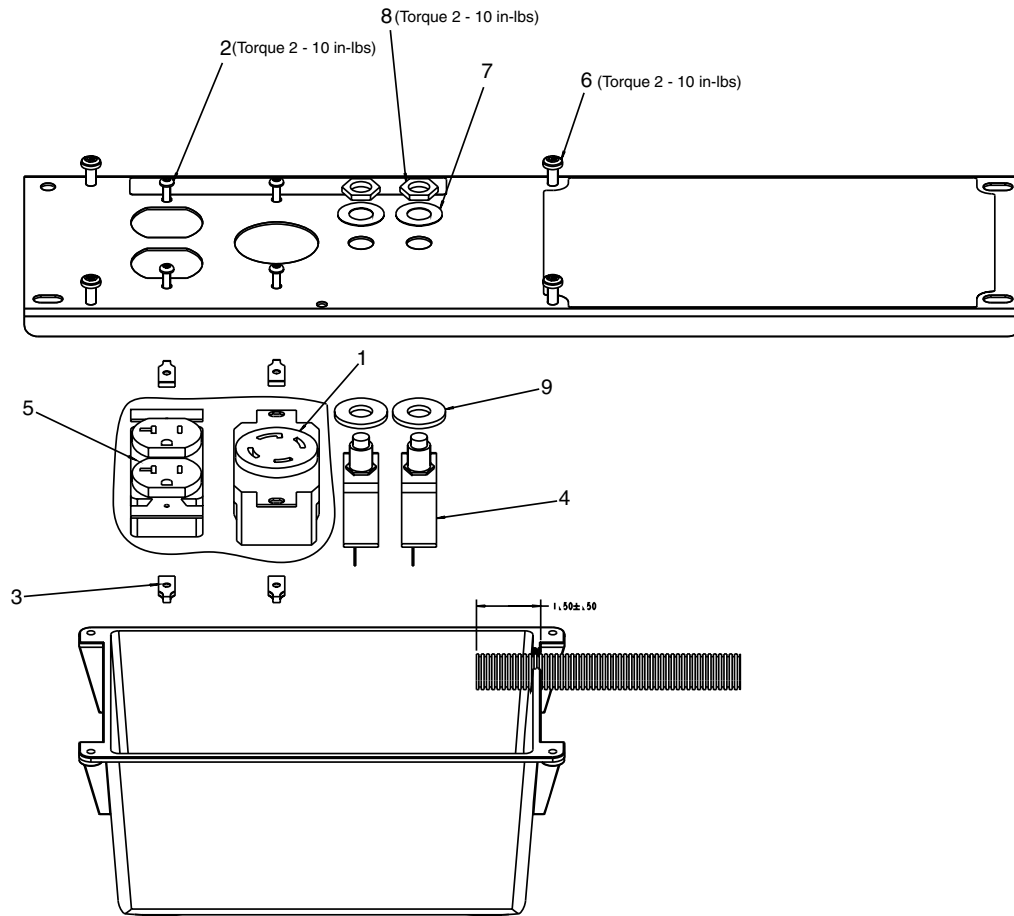
KEY NO.	DESCRIPTION	PART NUMBER
1	DRIVE END ADAPTER	GS-0511
2	LOCK WASHER 3/8	SS-1503-CD
3	CAP SCREW 5/16 - 24X1	SSF-616-ZN
4	ROTOR ASSEMBLY	GS-0410-1
5	STATOR THRU BOLT	GS-0415
6	STATOR ASSEMBLY	GS-0601
7	WASHER 11/16OD x 11/32	SS-6506-CD
8	NUT 5/16-24	SSF-576
9	ROTOR THRU BOLT	GS-0419-1
10	BEARING SUPPORT	GS-0861
12	HEX NUT 1/4-20	SSF-575
13	CAPACITOR	GS-0592
16	CAPACITOR BRACKET	GS-0595
17	SCREW 10 - 24 x 9/16	SSF-553-1
21	O-RING	GS-0862

ITEM NOT SHOWN

*DIODES GS-0082

*Refer to Page 4 in the Generator Repair Section for further **diode** information.

DGT5010-1 (cont'd)



KEY

NO.	DESCRIPTION	PART NUMBER
1	4 PRONG TWISTLOCK	GS-0445
2	SCREW #6 - 32 x .5 TORX	SSF-583
3	SPEED NUT #6 - 32	SSF-584
4	CIRCUIT BREAKER 125/250V/20A	GS-0025
5	120V/20A DUPLEX RECEPTACLE (20A)	GS-0019
6	SCREW, 10 - 9 X .50 PLASTITE	SSF-3156
7	SWITCH FACE PLATE RESET	GS-0207
8	NUT, HEX JAM 7/16	SSF-595
9	WASHER 3/8	SS-1525-CD

Not Shown

MG-GENMAN-F	Operators Manual
GEN-DGT5010-1	Parts Manual
GS-0496	Engine Manual