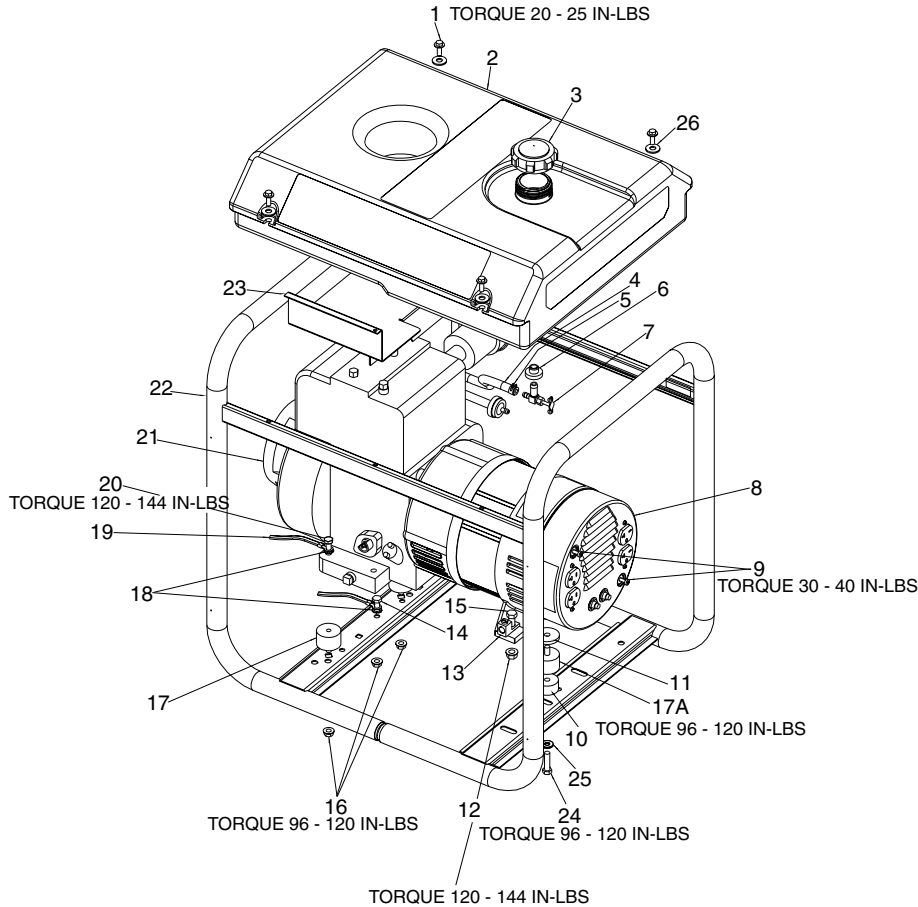


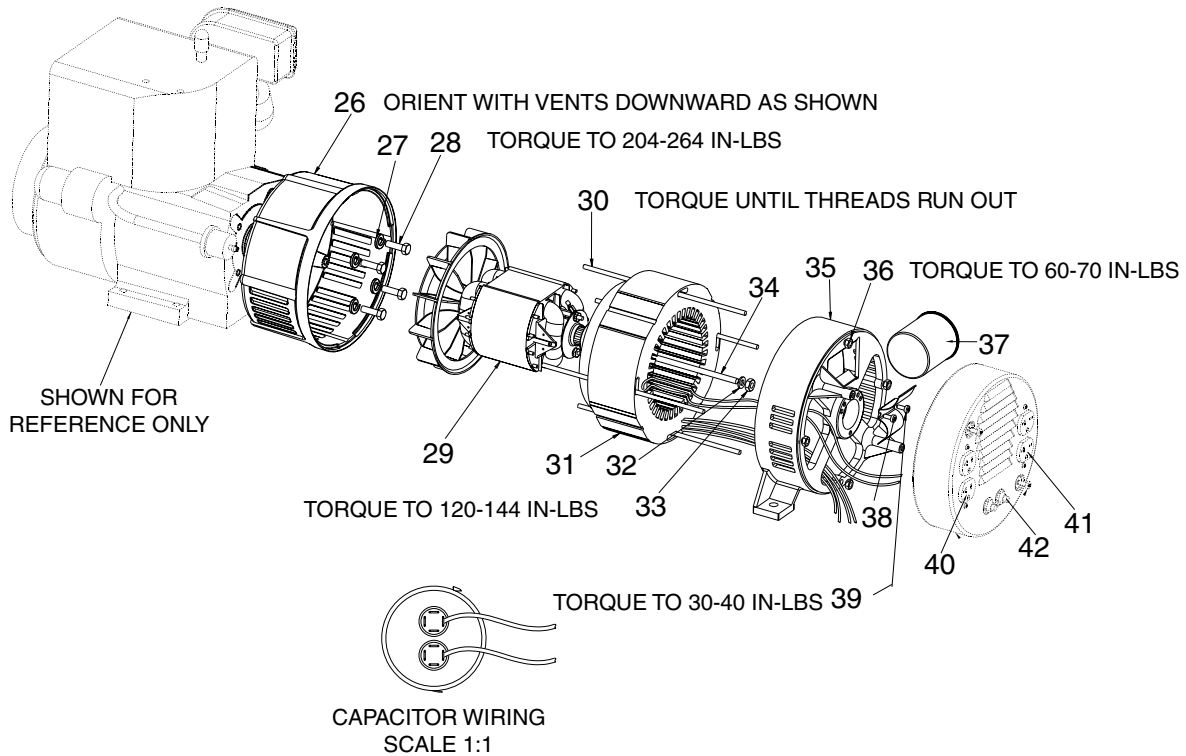
GB5010-2



KEY

<u>KEY NO.</u>	<u>DESCRIPTION</u>	<u>PART NUMBER</u>
1	FUEL TANK SCREWS	91895680
2	FUEL TANK	Z-GS-0795
3	FUEL CAP	GS-0443
4	FUEL HOSE	Z-GS-0225
5	FUEL LINE CLAMP	GS-0227
6	DRAINCOCK GROMMET	GS-0446
7	TANK DRAINCOCK	GS-0437
8	ENDCOVER	GS-0079
9	SCREW #10-24 x 9/6	SSF-553-1
10	REAR ISOLATOR SPACER	GS-0492
11	WASHER 3/8	SSN-1014-ZN
12	LOCK NUT 3/8-16	SSF-8111-ZN
13	GROUND LUG	GS-0117
14	SCREW 5/16-18 x 3/4	SS-12-CD
15	SCREW 3/8-16 x 1	SSF-3140-ZN
16	HEX NUT WHIZ LOCK	SSF-8150
17	ISOLATOR (FRONT)	GS-0033
17A	ISOLATOR (REAR)	GS-0033
18	LOCK WASHER	SSN-1619-ZN
19	GROUND STRAP	GS-0118
20	HEX SCREW 5/26-18 x 1.7	95829230
21	ENGINE (model #19E412-1131-E1)	-
22	FRAME ASSEMBLY	Z-GS-0467
23	HEAT SHIELD	D20827
24	SCREW 3/8-16 x 3/4	SSF-605
25	WASHER	SSN-60-ZN
26	WASHER	SSN-632

GB5010-2



KEY NO.	DESCRIPTION	PART NUMBER
26	DRIVE END ADAPTER	GS-0076
27	LOCK WASHER 3/8	SSN-619
28	CAP SCREW 3/8-16 x 1	SSF-577
29	ROTOR ASSEMBLY	Z-GS-0589
	on EXGB5010-2 use	Z-GS-0410-1
30	STATOR THRU BOLT	GS-0110
	on EXGB5010-2 use	GS-0415
31	STATOR ASSEMBLY	Z-GS-0589
	on EXGB5010-2 use	GS-0601
32	WASHER 11/16 OD x 11/32	SS-6506-CD
33	NUT 5/16-24	SSF-576
34	ROTOR THRU BOLT	GS-0091-1
	on EXGB5010-2 use	GS-0419-1
35	BEARING SUPPORT	Z-GS-0681
36	HEX NUT 1/4-20	SSF-575
37	CAPACITOR	GS-0592
38	CAPACITOR BRACKET	GS-0595
39	SCREW 10-32 x 1/2	SSF-553-1
40	120V DUPL. RECEPTACLE	GS-0019
41	240V DUPL. RECEPTACLE	GS-0020
42	CIRCUIT BREAKER(20A)	Z-GS-0025

ITEM NOT SHOWN

*DIODE(S) GS-0082

*Refer to Page 4 in the General Repair Section for GS-0082 Diode information.

Not Shown

MG-GENMAN-F Operators Manual
 GEN-5010-2 Parts Manual
 GS-0113 Engine Manual