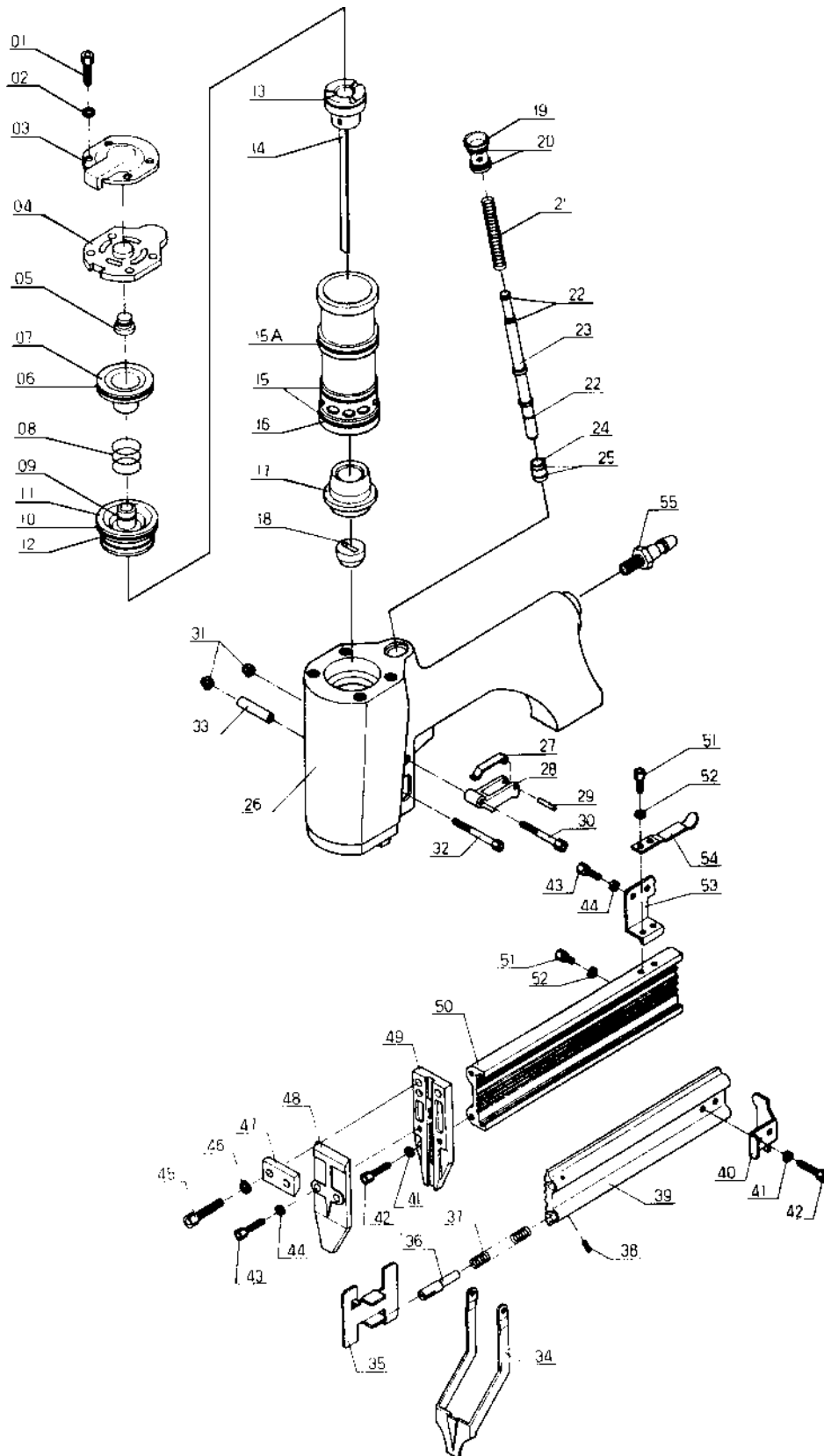


# FN7 - BREAKDOWN



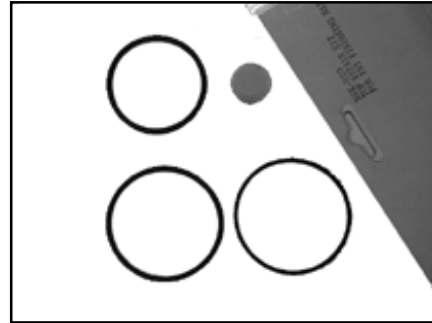
# FN7 - PARTS LIST

<u>KEY NO.</u>	<u>PART NUMBER</u>	<u>DESCRIPTION</u>	<u>KEY NO.</u>	<u>PART NUMBER</u>	<u>DESCRIPTION</u>
1	NSP-359	Screw	28	NSP-128	Trigger
2	NSP-360	Washer	29	NSP-129	Pin
3	NSP-361	Exhaust Deflector	30	NSP-379	Screw
4	NSP-362	Cylinder Cap Assy.	31		Nut
* 5	NSP-363	Insert of Cap	32	NSP-005	Screw
* 6	---	Seal	33	NSP-380	Spacer Sleeve
7	NSP-365	Cap Insert	34	NSP-381	Safety
8	NSP-366	Spring	35	NSP-382	Pusher
* 9	---	Seal	36	NSP-383	Pusher
* 10	----	Seal	37	NSP-384	Spring
11	NSP-369	Gasket Set	38	NSP-385	Pin
* 12	----	Seal	39	NSP-386	Magazine unit B
+ 13	----	Seal	40	NSP-387	Real Plate
+ 14	----	Drive Blade with Piston	41	NSP-388	Washer
# 15	----	Seal	42	NSP-389	Screw
# 15A	---	Seal	43	NSP-390	Screw
16	NSP-374	Cylinder Sleeve Assy.	44	NSP-391	Washer
# 17	---	Piston Stop	45	NSP-392	Screw
# 18	---	Joint Guide	46	NSP-393	Washer
19	NSP-121	Collar	47	NSP-394	Plate
\ 20	---	Seal	48	NSP-395	Door
\ 21	---	Spring	49	NSP-396	Guide Body
\ 22	---	Seal	50	NSP-397	Magazine Unit A
23	NSP-002	Shaft, Valve	51	NSP-398	Screw
24	NSP-126	Copper Cover	52	NSP-399	Washer
\ 25	----	Seal	53	NSP-400	Plate, Attaching
26	NSP-377	Main Body Assy.	54	NSP-401	Stopper
27	NSP-378	Inner Trigger	55	NSP-402	Air Plug

**See next page for Repair Kit contents**

# FN7 - REPAIR KITS

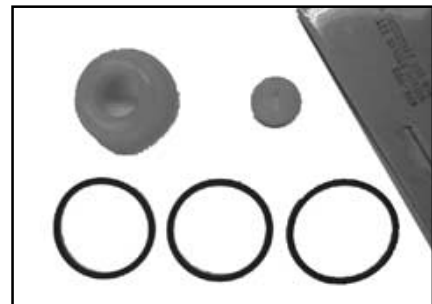
- \* Key Numbers 5, 6, 9, 10, and 12 can only be purchased as part of **NSK-020** Top Repair Kit.



- + Key Numbers 13, and 14 can only be purchased as part of **NSK-021** Driver Blade Kit.



- # Key Numbers 15, 15A, 17, and 18 can only be purchased as part of **NSK-022** Bottom Repair Kit.



- \ Key Numbers 20, 21, 22, and 25 can only be purchased as part of **NSK-023** Trigger Repair Kit.

