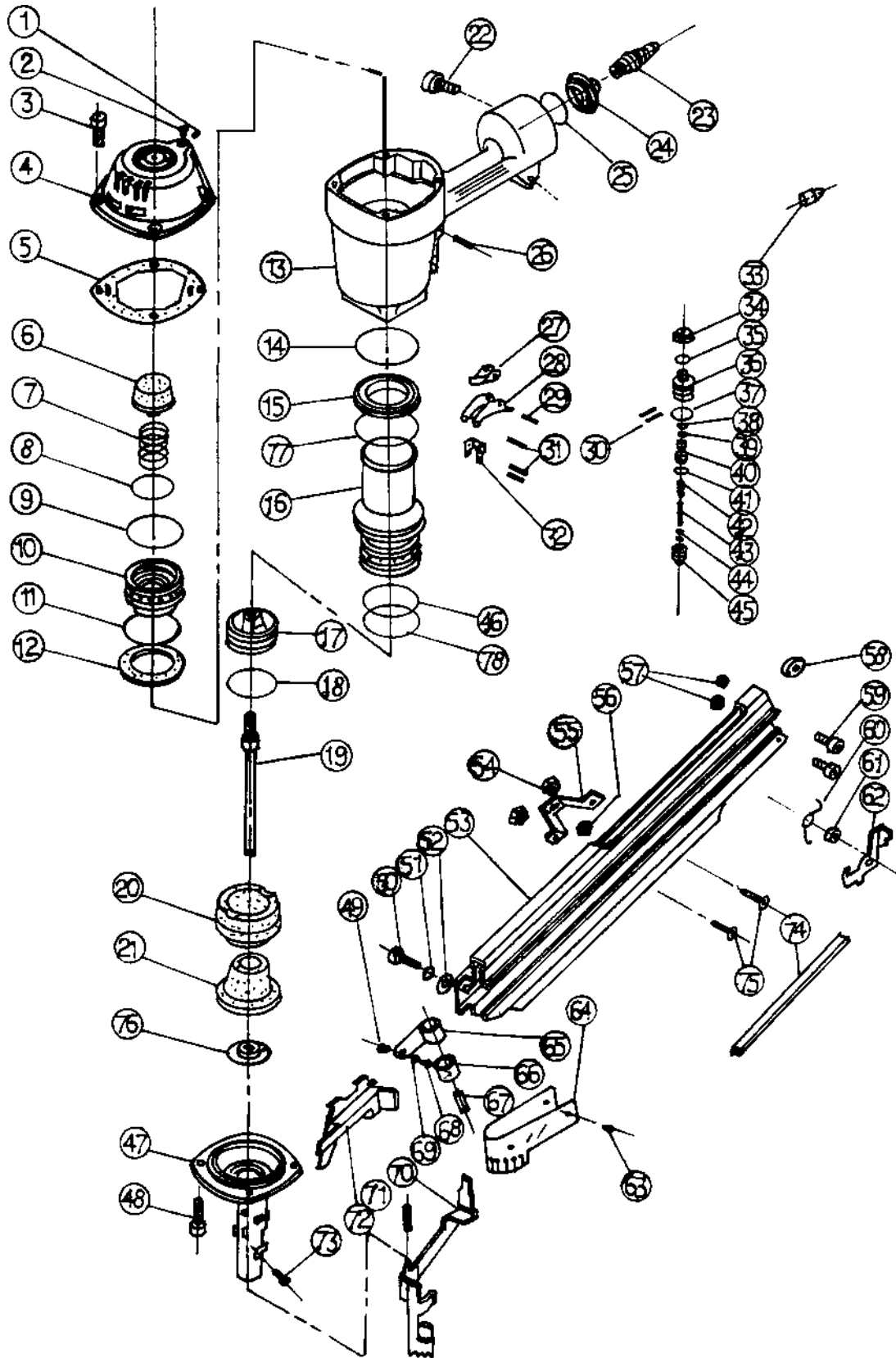


SFN6 - BREAKDOWN



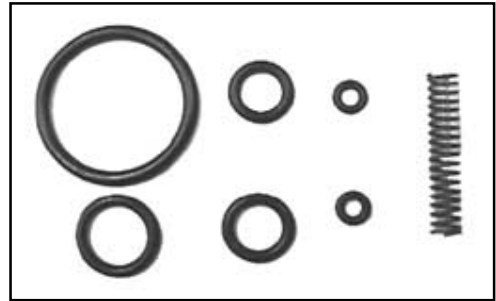
SFN6 - PARTS LIST

KEY NO.	PART NO.	DESCRIPTION	KEY NO.	PART NO.	DESCRIPTION
1	NSP-185	SET SCREW	40	NSP-224	PILOT VALVE
2	NSP-186	DUST CAP	✓ 41	-----	O-RING
3	NSP-187	HEX HEAD BOLT	✓ 42	-----	SPRING
4	NSP-188	CYLINDER CAP	43	NSP-227	TRIGGER VALVE STEM
* 5	-----	CAP SEAL	✓ 44	-----	O-RING
6	NSP-190	PISTON STOP	45	NSP-229	INNER VALVE SEAT
* 7	-----	COMPRESSION SPRING	46	NSP-230	O-RING
* 8	-----	O-RING	47	NSP-231	NOSE
* 9	-----	O-RING	48	NSP-232	HEX HEAD BOLT
10	NSP-194	HEAD VALVE PISTON	49	NSP-233	SPRING SEAT
* 11	-----	O-RING	50	NSP-234	HEX HEAD BOLT
12	NSP-196	HEAD VALVE SEAL	51	NSP-235	SPRING WASHER
13	NSP-197	BODY	52	NSP-236	FLAT WASHER
14	NSP-198	O-RING	53	NSP-237	MAGAZINE SEAT
15	NSP-199	CHECK SEAL	54	NSP-238	LOCK NUT
16	NSP-200	CYLINDER	55	NSP-239	SUPPORT
+17	-----	MAIN PISTON	56	NSP-240	LOCK NUT
+18	-----	O-RING	57	NSP-241	LOCK NUT
+19	-----	DRIVER	58	NSP-242	PUSHER STOP
^20	-----	BUMPER A	59	NSP-243	HEX HEAD BOLT
^21	-----	BUMPER B	60	NSP-244	LATCH SPRING .
22	NSP-206	HEX HEAD BOLT	61	NSP-245	LATCH BUSHING
23	NSP-207	COUPLING PLUG	62	NSP-246	LATCH
24	NSP-208	END CAP	63	NSP-247	LOCK CAP
25	NSP-209	O-RING	64	NSP-248	DUST SHIELD
26	NSP-210	SPRING PIN	65	NSP-249	PUSHER SPRING
27	NSP-211	CONTACT LEVER	66	NSP-250	ROLLER
28	NSP-212	TRIGGER	67	NSP-251	ROLLER PIN
29	NSP-213	SPRING PIN	68	NSP-252	BUTTON HEAD BOLT
30	NSP-214	STOP PIN	69	NSP-253	FLAT WASHER
31	NSP-215	SPRING PIN	70	NSP-254	SAFETY
32	NSP-216	SAFETY GUIDE	71	NSP-255	SPRING
33	NSP-217	DUST CAP	72	NSP-256	PUSHER
34	NSP-218	TRIGGER VALVE CAP	73	NSP-257	HEX HEAD BOLT
✓35	-----	O-RING	74	NSP-258	NAIL GUIDE
36	NSP-220	TRIGGER VALVE SEAT	75	NSP-259	BOLT
✓37	-----	O-RING	76	NSP-260	GUIDE RING
✓38	-----	O-RING	77	NSP-261	O-RING
✓39	-----	O-RING	78	NSP-262	O-RING

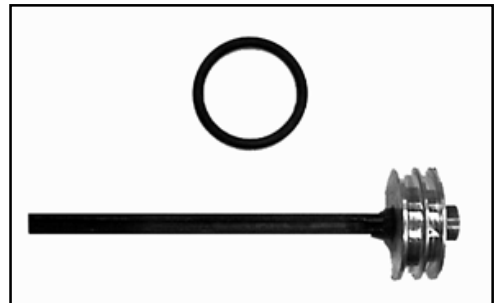
See next page for Repair Kit contents

SFN6 - REPAIR KITS

* Key Numbers 5, 7, 8, 9, and 11 can only be purchased in **NSK-009** Top Repair Kit.



+ Key Numbers 17, 18, and 19 can only be purchased in **NSK-010** Driver Blade Kit.



^ Key Numbers 20 and 21 can only be purchased in **NSK-011** Bottom Repair Kit.



✓ Key Numbers 35, 37, 38, 39, 41, 42, and 44 in **NSK-017** Trigger Repair Kit.

