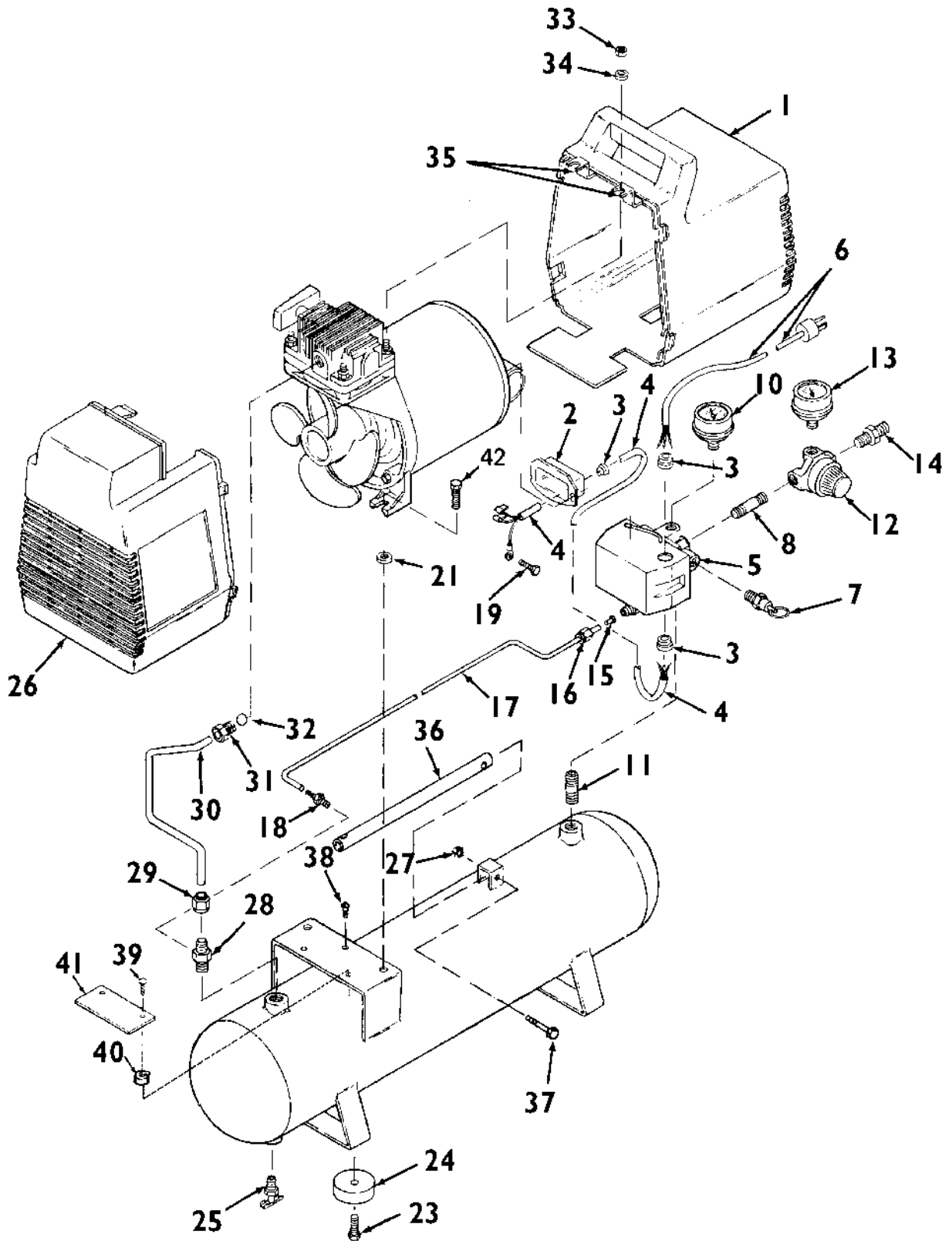


100E3D

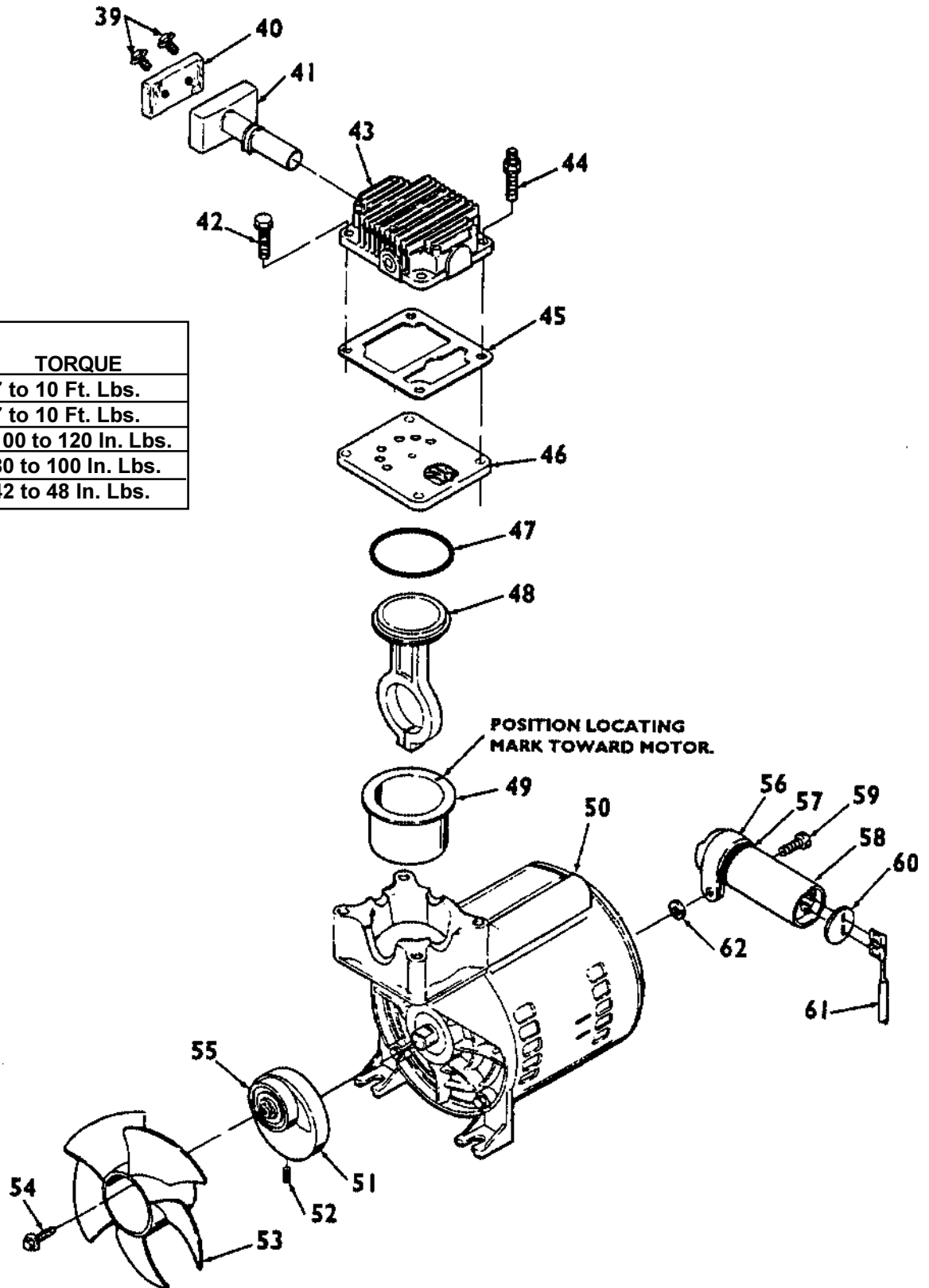


100E3D (cont'd)

KEY NO.	PART NUMBER	DESCRIPTION
1	DAC-486	Rear Shroud Assembly (includes two #35)
2	CAC-1423	Terminal Box Cover
3	SSW-7367	Strain Relief (3 used)
4	SUDL-402-2	Cord Assembly - Motor
5	CAC-4332-2	Pressure Switch
6	SUDL-403-1	Cord Assembly - Line
7	TIA-4150	Safety Valve
8	SS-1286	Nipple (1/4" NPT X 7/8" long)
10	C-GA-346	Tank Pressure Gauge, 1/4 NPT thread
11	SS-2071	Nipple (1/4" NPT X 1 1/2" long)
12	CAC-4296-1	Regulator
13	C-GA-345	Regulated Pressure Gauge, 1/8 NPT thread
14	H-2099	Adapter
15	SSP-9013	Tube Insert
16	SSP-7811	Nut/Sleeve Assy. (for 1/4" O.D. tube)
17	CAC-1245	Pressure Relief Tube
18	SSP-6088	Barbed Fitting
19	SUDL-9-1	Ground Screw
20	SSF-928	Screw (2 used) (torque to 90-100 in. lbs.)
21	SSW-7462	Spacer
23	SSF-607	Screw (4 used) (torque snug)
24	SST-5314-1	Rubber Foot (4 used)
25	SS-2707	Drain Valve
26	AC-0077	Front Shroud
27	SSF-8150	Locknut (5/16-18)
28	CAC-4290-3	Check Valve
29	SSP-7813	Nut Sleeve Assembly (for 3/8" O.D. Tube)
30	CAC-1155	Outlet Tube
31	SSP-7821-1	Nut (tighten to 100-120 in.lbs.)
32	CAC-1155	O-ring
33	SS-655-ZN	Locknut (2 used) (torque to 50-60 in. lbs.)
34	SSN-60-ZN	Washer (2 used)
35	CAC-1121	Bracket (2 used)
36	CAC-1267	Saddle Brace
37	SSF-999-1	Handle Screw (5/16-18 X 1 3/4")
38	SSF-953-ZN	Screw (#10- X 5/8" SMC)

100E3D (cont'd)

KEY NO.	TORQUE
55	7 to 10 Ft. Lbs.
56	7 to 10 Ft. Lbs.
66	100 to 120 In. Lbs.
69	80 to 100 In. Lbs.
◆	42 to 48 In. Lbs.



100E3D (cont'd)

KEY	NO.	PART NUMBER	DESCRIPTION
x	39	---	Air filter fastener (2 used)
x	40	DAC-143	Air filter
x	41	---	Intake muffler
x	42	SSF-990	Screw 1/4-20 x 1 1/4" (2 used, torque 7-10 ft. lbs.)
	43	CAC-1067-U-1	Head
	44	SSF-6640	Stud (2 used, torque 7-10 ft. lbs.)
	45	CAC-1066	Gasket
	46	ACG-402	Valve Plate Assembly (includes valves, restrictors & screws)
✓	47	SSG-8156	O-ring
*✓	48	-----	Connecting Rod Assembly (torque screw 30-45 in. lbs.)
*✓	49	---	Cylinder Sleeve (position locating mark toward motor)
	50	MO-3025-2	Motor 1 HP
	51	CAC-1023-3	Eccentric/Flywheel & Bearing Assembly (includes #55)
	52	DDG-2043	Screw (eccentric/Flywheel, torque 50-60 in. lbs.)
	53	CAC-1055-1	Fan
	54	SSF-3101	Screw #10-24 x 3/8" long (torque 30-45 in. lbs.)
	55	-----	Bearing (eccentric/Flywheel, torque 50-60 in. lbs.)
	56	DAC-118	Capacitor Bracket
	57	SS-9816	Electrical Tape
	58	SSE-3106	Capacitor - 2 Terminal
	59	SSF-1320	Screw (Torque 30-40 in. lbs.)
	60	DAC-120	Capacitor Insulator
	61	CAC-1177	Capacitor Wire Assy.
	62	SSN-1024-ZN	Lockwasher

NOT ILLUSTRATED

KK-4315	Pressure Relief Valve
MG2-OFTANK-4A	Owners Manual
MP2-1003D-1	Parts Manual

- * Keys 48 and 49 can only be purchased as part of KK-4835 Connecting Rod Kit.
- x Keys 39 and 41 can be purchased as part of KK-4877 Service Kit. (Also includes #40 and 42)
- ✓ Keys 47 and 49 can be purchased as part of K-0058 Service Kit.