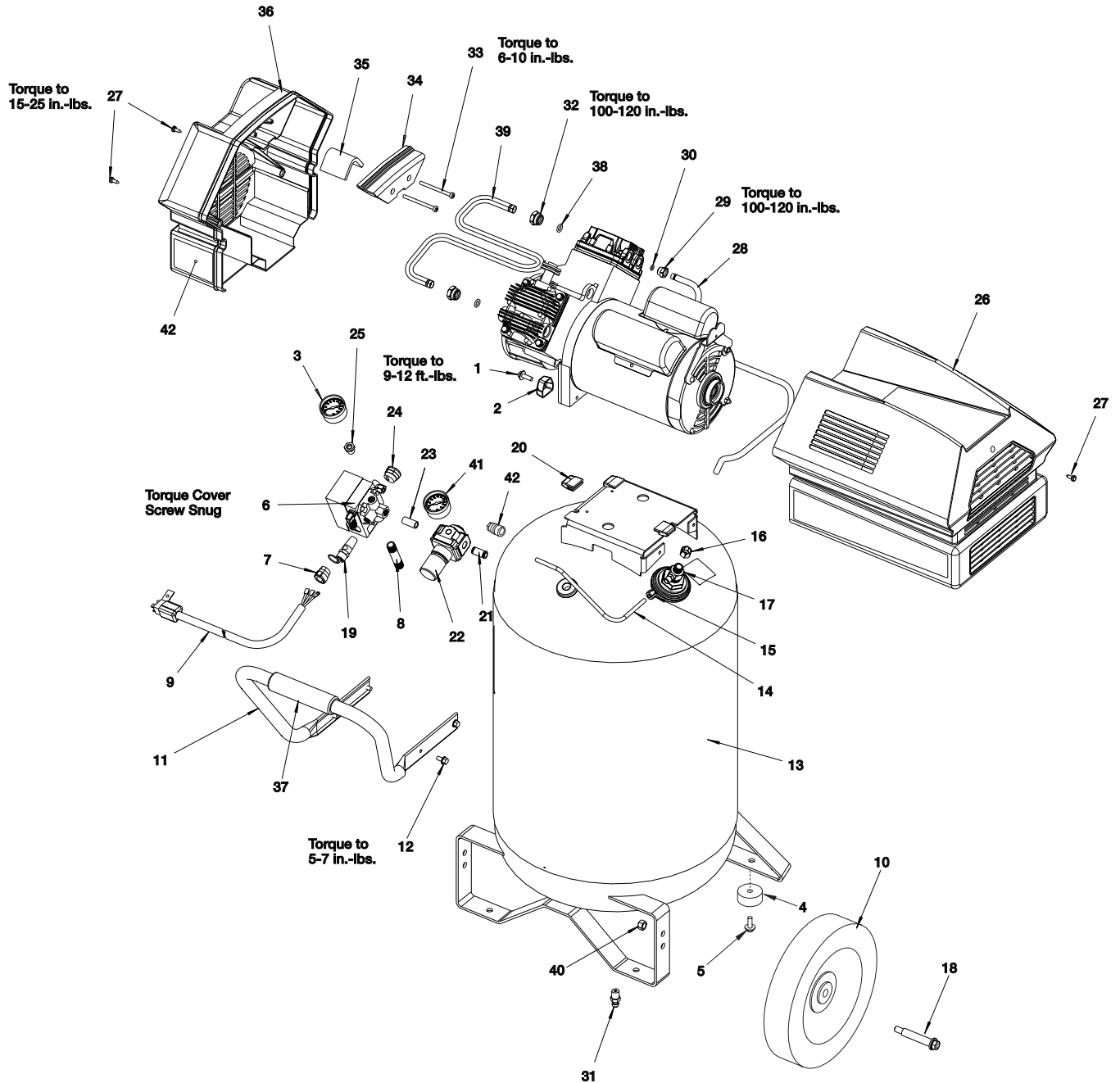


CPFC2TV3525VP



CPFC2TV3525VP (cont'd)

| <u>No.</u> | <u>Part Number</u> | <u>Description</u> |
|------------|--------------------|---|
| 1 | SSF-990 | Screw 1/4-20UNC-2A THD (2 used) |
| 2 | ACG-18 | Cup Saddle Mount (2 used) |
| 3 | D21041 | Gauge, 1.5 OD |
| 4 | SST-107 | Rubber Bumper |
| 5 | SSF-630 | Screw, 25 x 1.50 (2 used) |
| 6 | Z-AC-0789 | Pressure Switch |
| 7 | SSW-7482 | Connector Conduit 3/8 |
| 8 | SSP-480 | Nipple 1/4-18 NPT x 2.50 |
| 9 | SUDL-413-2 | Power Cord Assembly |
| 10 | AC-0014 | Wheel 9" |
| 11 | AC-0609 | Handle |
| 12 | SSF-981 | Screw Hex HD Self Tapping (4 used) |
| 13 | Z-D21024 | Tank 20G Vertical |
| 14 | AC-0630 | Pressure Relief Tube |
| 15 | SSP-7811 | Nut Sleeve Assembly 1/4" |
| 16 | SSP-7813 | Nut Sleeve Assembly 3/8" |
| 17 | AC-0631 | Check Valve 7/8 HEX x 1/4 |
| 18 | CAC-60 | Shoulder Bolt 3/8 - 16 |
| 19 | TIA-4200 | Safety Valve |
| 20 | AC-0774 | Isolator (3 used) |
| 21 | H-2099 | Adapter |
| 22 | D20643 | Regulator |
| 23 | SS-2071 | Nipple Close 1/4-18 NPTx1.5 |
| 24 | SSW-7367 | Bushing Strain Relief |
| 25 | SSP-6021 | Bushing Reducer 1/8-1/4 NPT |
| 26 | D21026 | Shroud, Rear |
| 27 | ACG-408 | Fastener Assembly (3 used) |
| 28 | AC-0803 | Outlet Tube |
| 29 | SSP-7821-1 | Nut Tubing 3/8"OD |
| 30 | SSG-3105 | O-Ring |
| 31 | SS-2707 | Drain Valve |
| 32 | AC-0780 | Nut Tubing 1/2"OD (2 used) |
| 33 | SSF-554 | Screw 10-14 x 2.5 (2 used) |
| 34 | D21028 | Intake Muffler Cover |
| 35 | ACG-12 | Element Intake Filter |
| 36 | D21030 | Shroud, Front |
| 37 | AC-0558 | Grip |
| 38 | AC-0781 | O-Ring .362ID x .103 width (2 used) |
| 39 | AC-0802 | Interconnecting Tube |
| 40 | SSF-8080-ZN | Hex Nut 3/8 - 16 |
| 41 | D21039 | Gauge, 2.00 OD |
| 42 | D20675 | Quick Connect 1/4NPT (not assembled) |

For Pump Assembly breakdown Z-AC-0782, see Pump Tab

Not Shown

| | |
|--------|-------------------|
| D21682 | Parts Manual |
| D21683 | Operator's Manual |