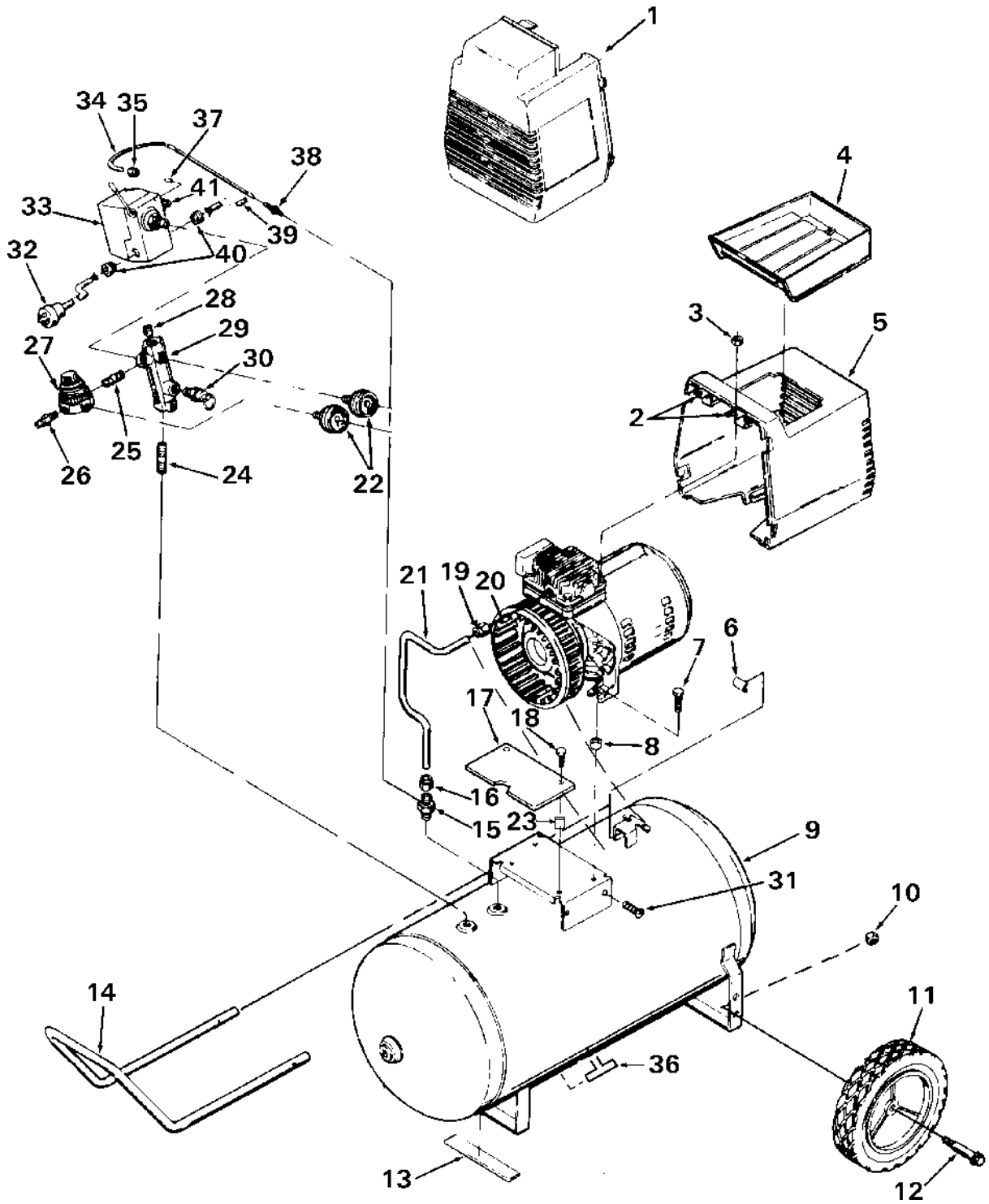


F2512-2

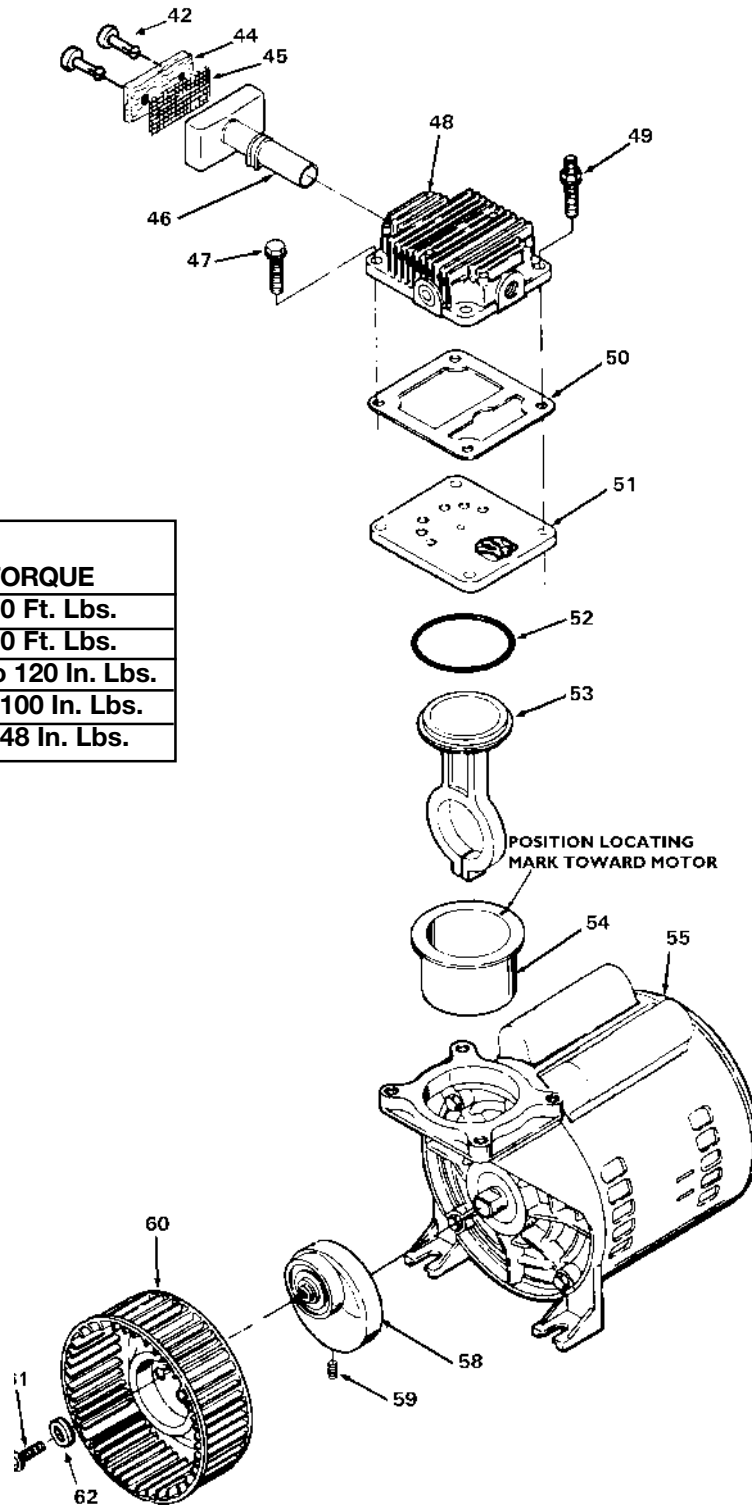


F2512-2 (cont'd)

KEY

<u>NO.</u>	<u>PART NUMBER</u>	<u>DESCRIPTION</u>
1	CAC-1140	Shroud - front
2	CAC-1121	Bracket (2 used - included with #11)
3	SS-655-ZN	Hex nut 1/4"-20 (2 used)
4	CAC-1080	Tool Tray
5	CAC-4317	Rear Shroud Assembly (includes 2 ea. #7)
6	CAC-1099	U-Channel Isolator
7	SSF-505	Shoulder Screw (2 used)
8	CAC-1098	Isolator (2 used)
9	-----	-----
10	SSF-8080-ZN	Nut 3/8"-16 (2 used)
11	CAC-4293	Wheel (2 used)
12	CAC-60	Shoulder Bolt 3/8"-16 x 2 1/4" (2 used)
13	SUDL-6-1	Rubber Foot Strip
14	CAC-1304-1	Handle (black finish)
15	CAC-4290-3	Check Valve
16	SSP-7813	Nut Sleeve Assembly (for 3/8" O.D. Tube)
17	AC-0155	Shroud Plate
18	SSF-1000	Ratchet Fastener (2 used)
19	SSP-7821-1	Nut (tighten until it stops against head)
20	CAC-1120	Silicone Sleeve
21	CAC-1155	Outlet Tube
22	C-GA-352	Pressure Gauge (2 used)
23	SSN-62	Nylon Spacer (2 used)
24	SS-2072-1	Nipple (3/8" NPT x 1 1/2 long)
25	SS-2071	Nipple (1/4" NPT x 1 1/2" long)
26	H-2099	Adapter
27	CAC-4296-1	Regulator
28	SS-3222-CD	Pipe Plug 1/4" NPT
29	CAC-1327	Manifold
30	97503734	Safety Valve ASME
31	SSF-981	Self Tapping Screw
32	SUDL-403-1	Cord Assembly - Line
33	CAC-4221-2	Pressure Switch
34	CAC-1085	Pressure Relief Tube (warm tube before installing on #50.)
35	SSP-7811	Nut Sleeve Assembly (1/4")
36	SS-2707	Drain Valve
37	SSP-9013	Tube Insert
38	SSP-6088	Barbed Fitting
39	CAC-4215-1	Cord Assembly - Motor
40	SSW-7367	Strain Relief (2 used)
41	KK-4315	Pressure Release Valve and Mounting Nut (included with #43)

F2512-2 (cont'd)



KEY NO.	TORQUE
49	7 to 10 Ft. Lbs.
47	7 to 10 Ft. Lbs.
59	100 to 120 In. Lbs.
61	80 to 100 In. Lbs.
◆	42 to 48 In. Lbs.

F2512-2 (cont'd)

KEY	NO.	PART NUMBER	DESCRIPTION
+	43	-----	Fastener, Filter
	44	DAC-143	Air Filter
+	45	-----	Muffler Screen
+	46	-----	Intake Muffler
	47	SSF-990	Screw 1/4"-20 x 1 1/4" (6 used, torque 7-10 ft.lbs.)
	48	KK-5040	Head
	49	SSF-6640	Stud 1/4"-20 x 1 1/4" (2 used, torque 7-10 ft.lbs.)
	50	CAC-1175	Gasket
	51	KK-5040	Valve Plate Assembly (includes valves, restrictors & screws)
*	52	SSG-8156	O-ring
*	53	-----	Connecting Rod Assembly (torque screw 30-35 in.lbs.)
*	54	-----	Cylinder Sleeve (position locating mark towards motor)
	55	Z-MO-3018-4	Motor 2.5 HP
	58	Z-CAC-4086	Eccentric Flywheel Bearing Assy.
	59	SSF-3153	Screw (eccentric, torque 120-140 DR in.lbs.)
/	60	-----	Squirrel Cage Fan
/	61	-----	Screw 1/4-28 UNF long (torque 30-35 in.lbs.)
/	62	-----	Washer

NOT ILLUSTRATED

H-5796	Air Hose Assembly (1/4" I.D. x 15')
SSH-8	Air Chuck
MG2-OFTANK-4A	General Manual
MP2-F2512-2	Parts Manual

+ Keys 43, 45 and 46 can only be purchased as part of KK-4977. (Also includes one of Key 44.)

* Keys 52, 53 and 54 can only be purchased as part of KK-4835 connecting rod kit.

/ Key No's 60, 61 and 62 can only be purchased as part of kit KK-5018.