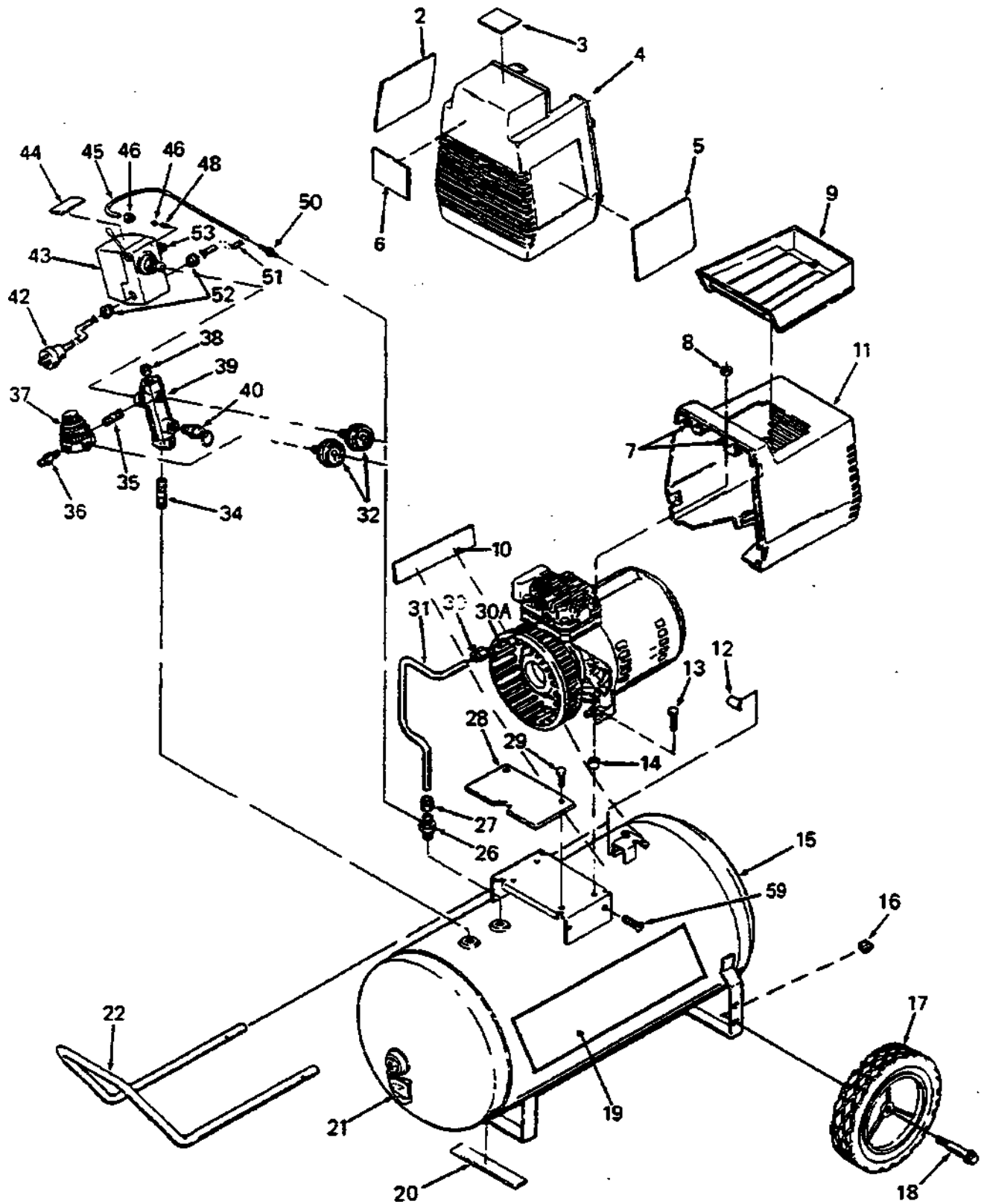


F2512

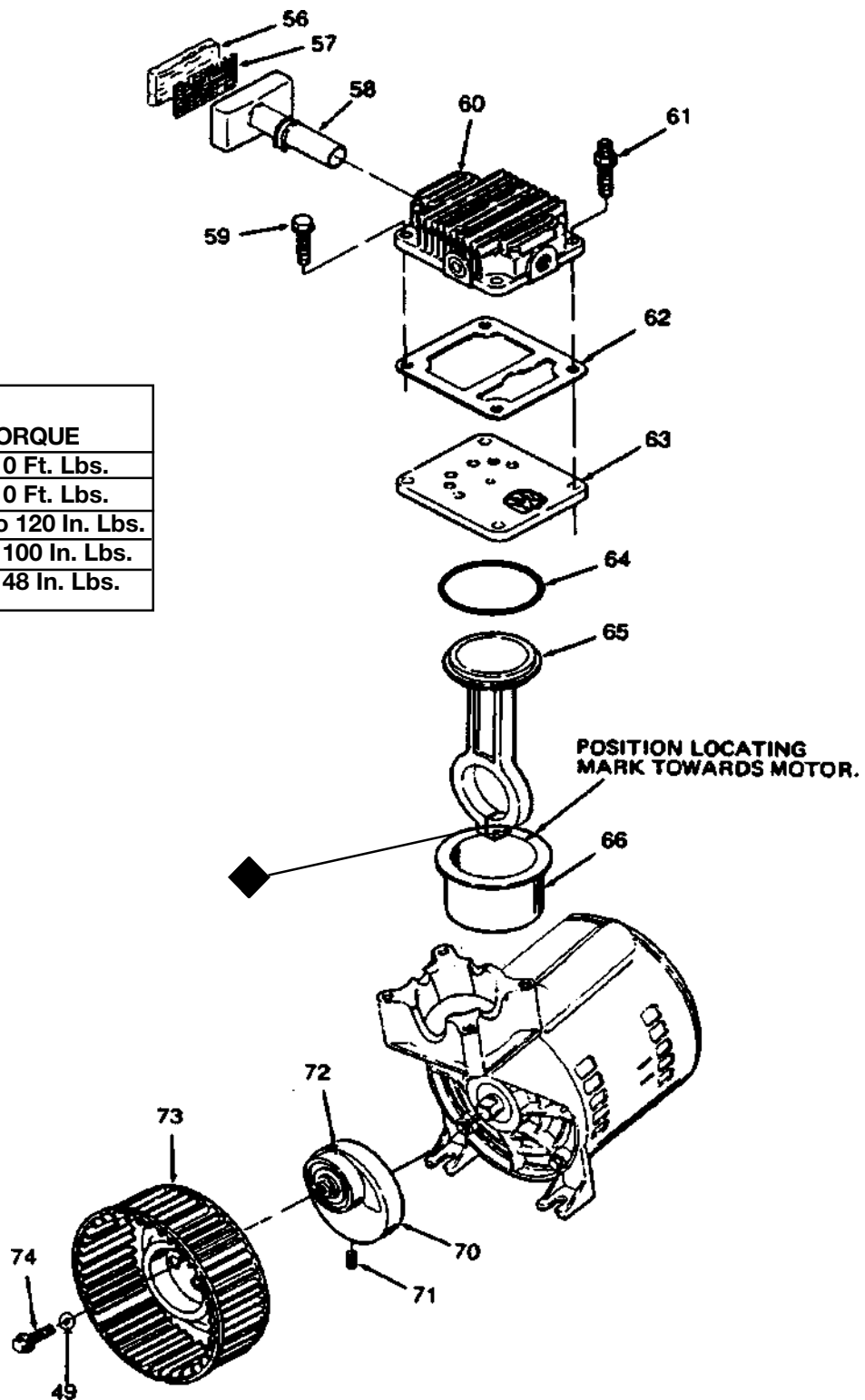


F2512 (cont'd)

KEY NO.	PART NUMBER	DESCRIPTION
4	CAC-331-1	Shroud - front
7	CAC-1121	Bracket (2 used - included with #10)
8	SS-655-ZN	Hex Nut 1/4"-20 (2 used)
9	CAC-1080	Tool tray
11	CAC-4317	Rear shroud assembly (includes 2 ea. #7)
12	CAC-1099	U-Channel isolator
13	SSF-505	Shoulder screw (2 used)
14	CAC-1098	Isolator (2 used)
16	SSF-8080-ZN	Nut 3/8"-16 (2 used)
17	CAC-4293	Wheel 8" (2 used)
18	CAC-60	Shoulder bolt 3/8"-16 x 2 1/4" (2 used)
20	SUDL-6-1	Rubber foot strip
22	CAC-1304-1	Handle (black finish)
26	CAC-4290-3	Check Valve
27	SSP-7813	Nut sleeve assembly (for 3/8" O.D. Tube)
28	CAC-333-1	Shroud Plate
29	SSF-1000	Ratchet Fastener (2 used)
30	SSP-7821	Nut (tighten until it stops against head)
30A	CAC-1120	Silicone Sleeve
31	CAC-1083-1	Outlet tube
32	GA-352	Pressure Gauge (2 used)
34	SS-2072-1	Nipple (3/8" NPT x 1 1/2" long)
35	SS-2071	Nipple (1/4" NPT x 1 1/2" long)
36	H-2099	Adapter
37	CAC-4296-1	Regulator
38	SS-3222-CD	Pipe plug 1/4" NPT
39	CAC-365	Manifold
40	TIA-6125	Safety valve ASME
42	SUDL-403-1	Cord assembly - line
43	CAC-4220-2	Pressure switch
45	CAC-1085	Pressure relief tube (warm tube before installing on #50)
46	SSP-7811	Nut sleeve assembly (1/4")
48	SSP-9013	Tube insert

F2512 (cont'd)

KEY NO.	TORQUE
61	7 to 10 Ft. Lbs.
59	7 to 10 Ft. Lbs.
71	100 to 120 In. Lbs.
74	80 to 100 In. Lbs.
◆	42 to 48 In. Lbs.



F2512 (cont'd)

KEY

<u>NO.</u>	<u>PART NUMBER</u>	<u>DESCRIPTION</u>
49	SS-6505-CD	Washer (1/4")
50	SSP-6088	Barbed Fitting
51	CAC-4215-1	Cord Assembly - Motor
52	SSW-7367	Strain Relief (2 used)
53	KK-4315	Pressure Release Valve and Mounting Nut (included with #43)
54	-----	Not Used
55	-----	Not Used
56	CAC-260-2	Air Filter
57	CAC-1174	Muffler Screen
58	CAC-1046	Intake Muffler
59	SSF-990	Screw 1/4"-20 x 1 1/4" (6 used, torque 7-10 ft. lbs.)
60	CAC-1067-U-1	Head
61	SSF-6640	Stud 1/4"-20 x 1 1/4" (2 used, torque 7-10 ft. lbs.)
62	CAC-1175	Gasket
63	CAC-4281-1	Valve plate assembly (includes valves, restrictors & screws)
* 64	SSG-8156	O-ring
* 65	-----	Connecting Rod Assembly (torque screw 30-35 in. lbs.)
* 66	-----	Cylinder Sleeve (position locating mark towards motor)
67	C-MO-3018	Motor 2.5 HP
68	SSW-5394	Terminal Box Cover
69	SSF-993	Ground Screw
71	CAC-4306	Eccentric Flywheel Bearing Assy. (includes 1 ea. #72)
72	SSF-2043	Screw (eccentric, torque 50-60 in. lbs.)
74	SST-3025	Bearing (eccentric)
75	CAC-1148-1	Squirrel Cage Fan
77	SSF-3101	Screw #10-24 x 3/8" long (torque 30-35 in. lbs.)

NOT ILLUSTRATED

H-5796	Air Hose Assembly (1/4" I.D. x 15')
SSH-8	Air Chuck
MG2-OFTANK-4A	General Manual
MP2-F2512-1	Parts

* Keys 64, 65 and 66 can only be purchased as part of KK-4835 connecting rod kit.