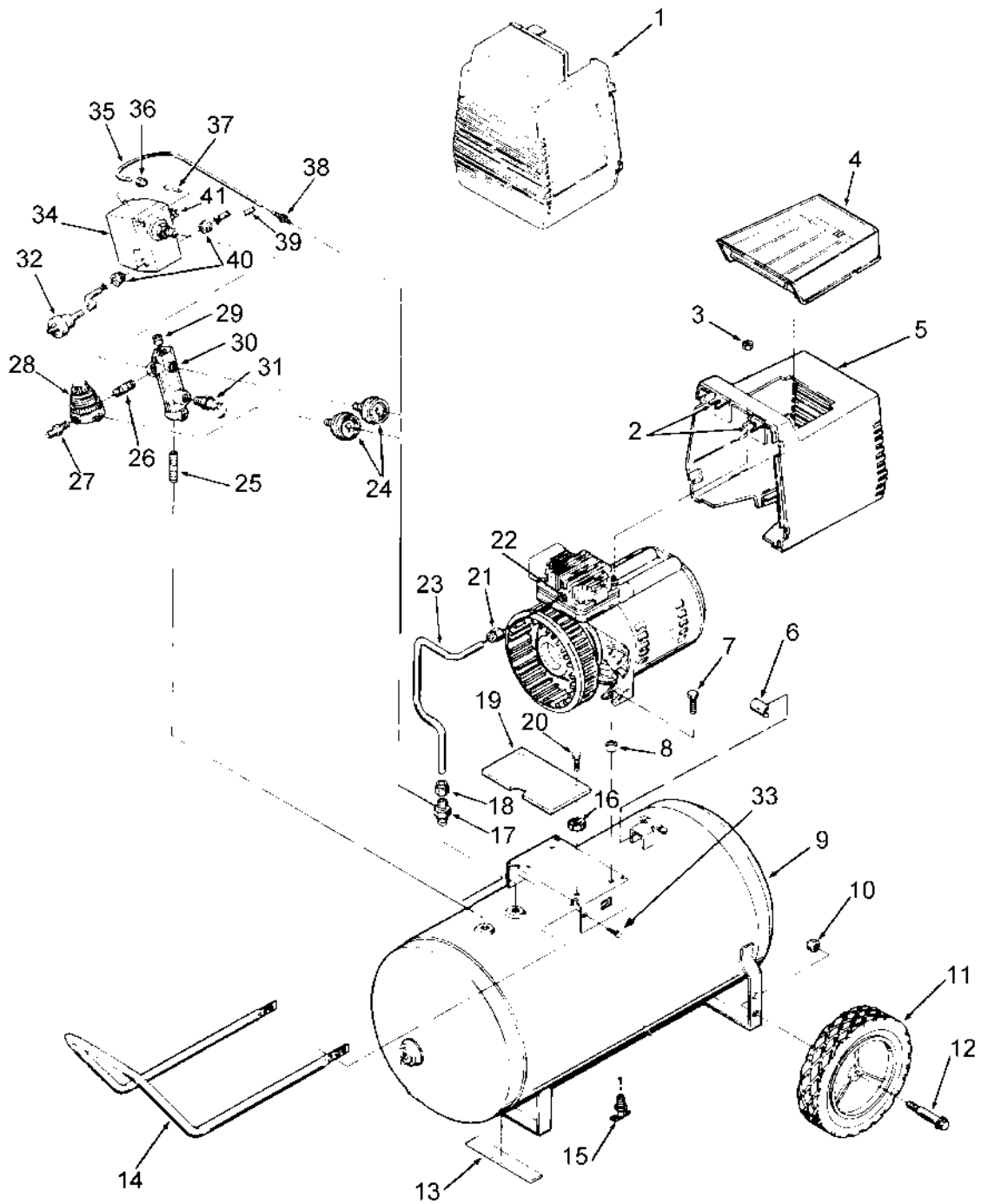


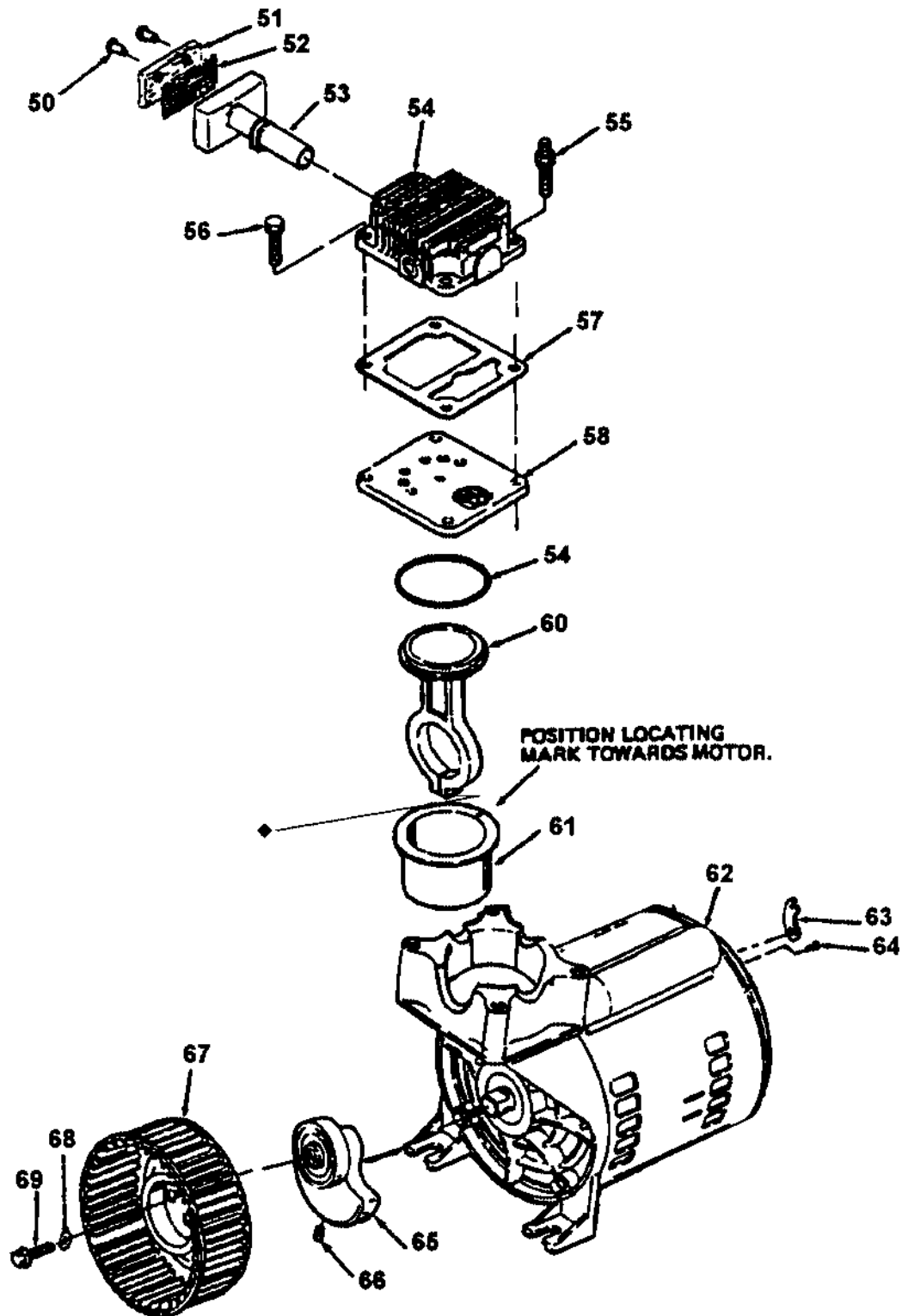
F3520



F3520 (cont'd)

| KEY NO. | PART NUMBER | DESCRIPTION |
|--------------------|--------------------|---|
| 1 | CAC-1140 | Shroud - front |
| 2 | CAC-1121 | Bracket (2 used - included with #10) |
| 3 | SS-655-ZN | Hex Nut 1/4"-20 (2 used) |
| 4 | CAC-1080 | Tool tray |
| 5 | CAC-1082-1 | Rear shroud assembly (includes 2 ea. #7) |
| 6 | CAC-1099 | U-Channel isolator |
| 7 | SSF-505 | Shoulder screw (2 used) |
| 8 | CAC-1098 | Isolator (2 used) |
| 10 | SSF-8080-ZN | Nut 3/8"-16 (2 used) |
| 11 | CAC-4313 | Wheel (2 used) |
| 12 | CAC-60 | Shoulder bolt 3/8"-16 x 2 1/4" (2 used) |
| 13 | SUDL-6-1 | Rubber foot strip |
| 14 | CAC-1304-1 | Handle |
| 15 | SS-2707 | Drain Tank |
| 16 | SSN-62 | Nylon Spacer (2 used) |
| 17 | CAC-4290-3 | Check valve |
| 18 | SSP-7813 | Nut sleeve assembly (for 3/8" O.D. Tube) |
| 19 | AC-0155 | Shroud Plate |
| 20 | SSF-1000 | #12-3/4 Hex Hd. Screw (2 used) |
| 21 | SSP-7821 | Nut (tighten until it stops against head) |
| 22 | CAC-1120 | Silicone Sleeve |
| 23 | CAC-1155 | Outlet tube |
| 24 | GA-352 | Pressure Gauge (2 used) |
| 25 | SS-2110 | Nipple (3/8" NPT x 1 1/2" long) |
| 26 | SS-2071 | Nipple (1/4" NPT x 1 1/2" long) |
| 27 | H-2099 | Adapter |
| 28 | CAC-4296-1 | Regulator |
| 29 | SS-3222-CD | Pipe plug 1/4" NPT |
| 30 | CAC-365 | Manifold |
| 31 | TIA-4150 | Safety valve ASME |
| 32 | SUDL-403-1 | Cord assembly - line |
| 33 | SSF-981 | Handle Screw (4 used) |
| 34 | CAC-4221-2 | Pressure switch |
| 35 | CAC-1085 | Pressure relief tube (warm tube before installing on #50) |
| 36 | SSP-7811 | Nut sleeve assembly (1/4") |
| 37 | SSP-9013 | Tube insert |
| 38 | SSP-6088 | Barbed fitting |
| 39 | CAC-4215-1 | Cord assembly - motor to switch |
| 40 | SSW-7367 | Strain relief (2 used) |
| 41 | KK-4315 | Pressure release valve kit |

F3520 (cont'd)



F3520 (cont'd)

| KEY | NO. | PART NUMBER | DESCRIPTION |
|------------|------------|--------------------|--|
| + | 50 | --- | Air filter fastener (2 used) |
| | 51 | DAC-143 | Air filter |
| + | 52 | --- | Muffler screen |
| + | 53 | --- | Intake muffler |
| | 54 | AC-0037 | Head |
| | 55 | SSF-589 | Stud 1/4"-20 x 1 1/4" |
| | 56 | SSF-927 | Screw 1/4-20 x 1 1/4" |
| | 57 | ACG-45 | O-Ring |
| | 58 | AC-0032 | Valve plate assembly (includes valves, restrictors & screws) |
| * | 59 | SSG-8156 | O-ring |
| * | 60 | --- | Connecting rod assembly |
| * | 61 | --- | Cylinder sleeve (position locating mark toward motor) |
| | 62 | M0-9045 | Motor |
| | 65 | AC-0140 | Eccentric Flywheel Bearing Assy. |
| | 66 | SSF-990 | Screw, 1/4-20 unc-2A |
| ✓ | 67 | ----- | Fan |
| ✓ | 68 | ----- | Washer |
| ✓ | 69 | ----- | Screw 1/4-20 unc X .75 |

NOT ILLUSTRATED

| | |
|---------------|------------------------|
| SSH-20 | Air Chuck |
| H-5796 | Air Hose 1/4" ID x 15' |
| H-5797 | Air Hose 1/4" ID x 15' |
| MG2-OFTANK-4A | General Manual |
| MP2-F3520 | Parts Manual |

+ Keys 50, 52 and 53 can only be purchased as part of KK-4981 (also includes Key #51).

* Keys 59, 60 and 61 are purchased as part of KK-4835 piston/cylinder kit.

✓ Keys 67, 68 and 69 can only be purchased as part of KK-5018 fan kit.