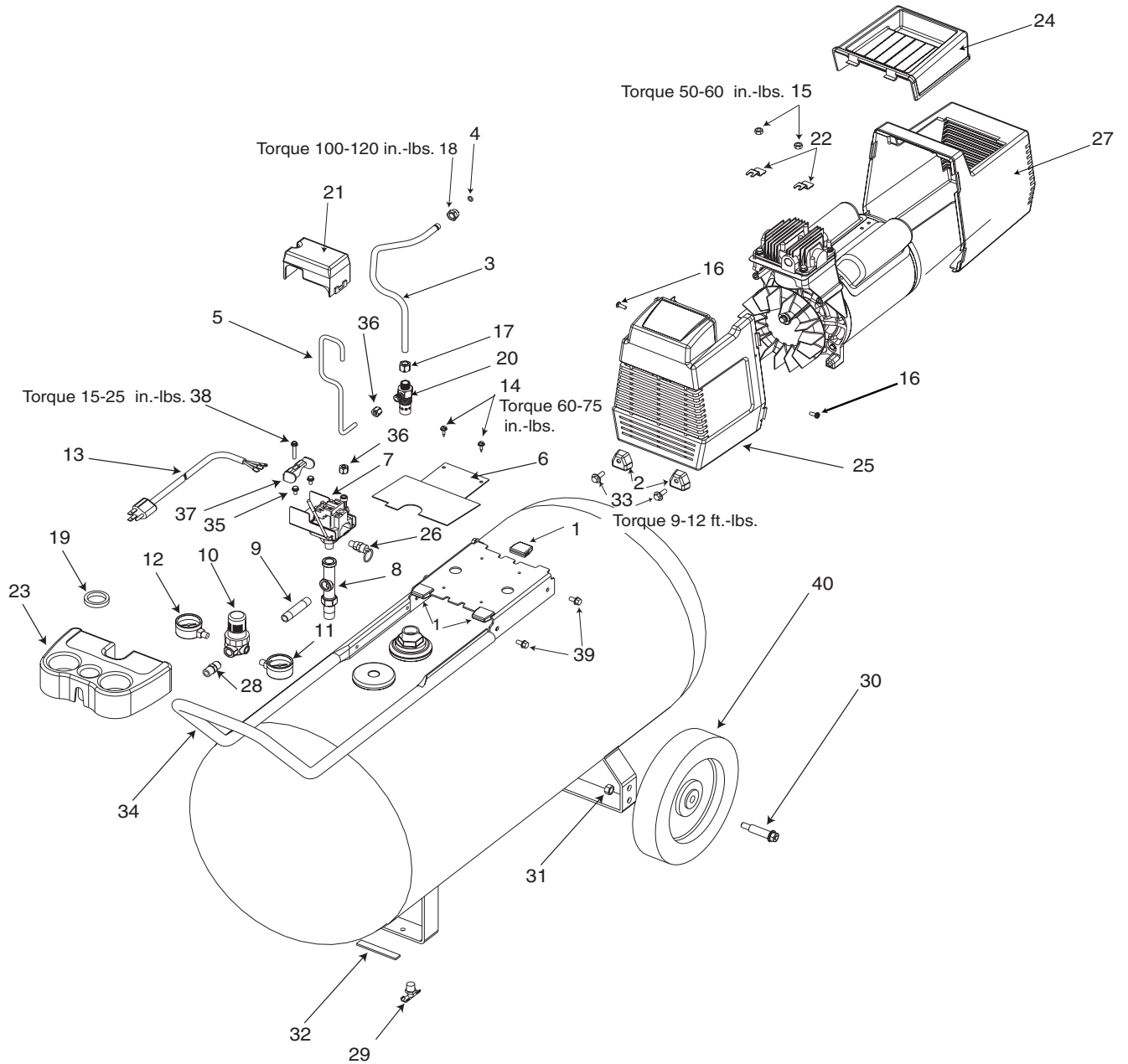


F5530 / FC5530



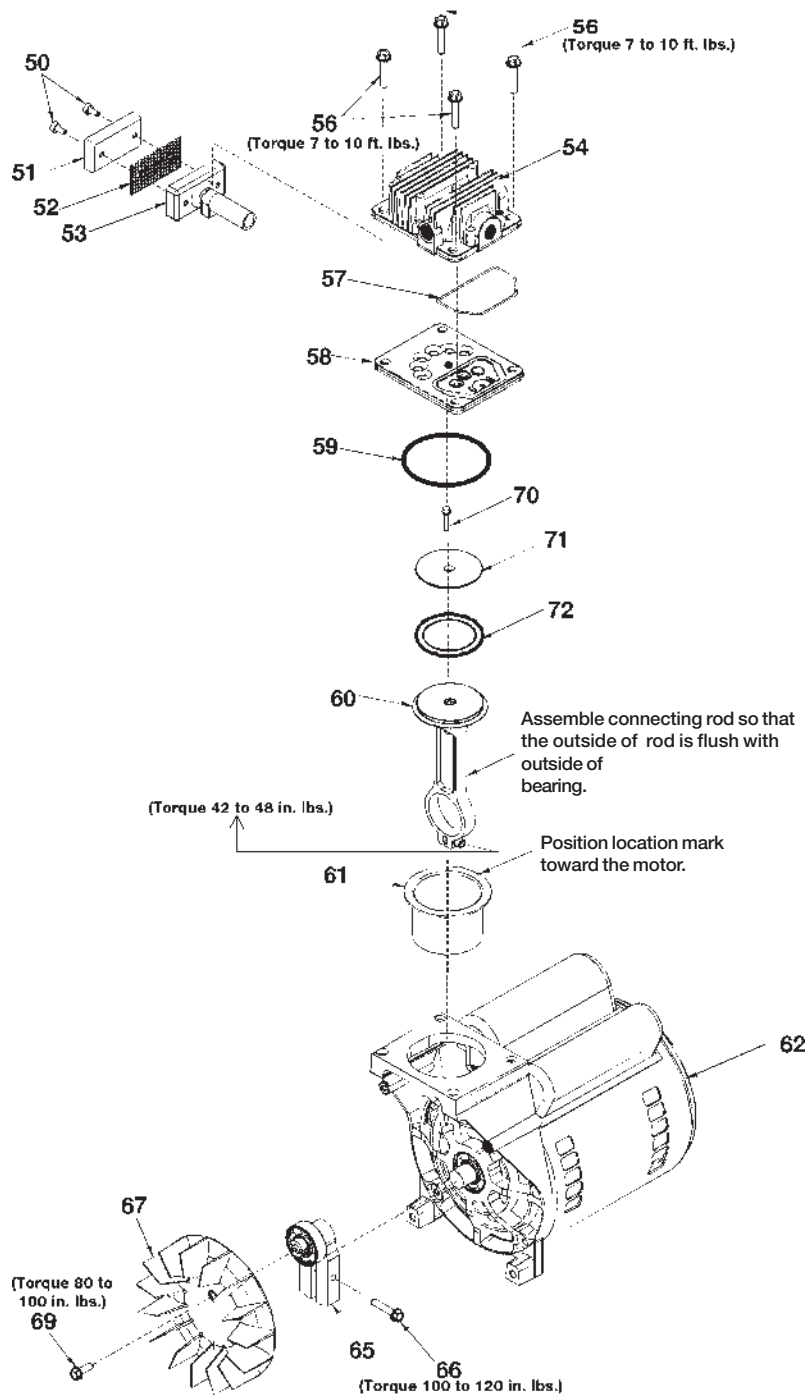
F5530 / FC5530 (cont'd)

| KEY NO. | PART NUMBER | DESCRIPTION |
|--------------------|--------------------|---------------------------------------|
| 1 | ACG-19 | Isolator (3 used) |
| 2 | ACG-18 | Cup, Saddle Mount (2 used) |
| 3 | AC-0125 | Outlet Tube |
| 4 | SSG-3105 | O-Ring |
| 5 | AC-0028 | Pressure Relief Tube |
| 6 | AC-0047 | Shroud Plate |
| 7 | AC-0008-2 | Pressure Switch Assembly |
| 8 | AC-0027-2 | Manifold |
| 9 | SSP-480 | Nipple, 1/4-18 NPT X 2.50 |
| 10 | AC-0007 | Regulator |
| 11 | AC-0009-1 | Gauge, Right Hand |
| 12 | AC-0010-1 | Gauge, Left Hand |
| 13 | SUDL-413-2 | Power Cord |
| 14 | SSF-953-ZN | Screw, Self Tapping 10 x 5/8 (2 used) |
| 15 | SS-655-ZN | Hex Nut, 1/4-20 (2 used) |
| 16 | SSF-3156 | Screw, 10-9X.50 Plastite (2 used) |
| 17 | SSP-7813 | Nut/Sleeve Assembly 3/8" |
| 18 | SSP-7821-1 | Brass Compression Nut 3/8" |
| 19 | CAC-61 | Ring, Panel Mounting |
| 20 | AC-0631 | Check Valve |
| 21 | ----- | (Order Key #7) |
| 22 | CAC-1121 | Bracket, Shroud (2 used) |
| 23 | AC-0011 | Cover, Console |
| 24 | CAC-1080 | Tool Tray |
| 25 | AC-0078 | Front Shroud |
| 26 | 97503734 | Safety Valve |
| 27 | AC-0046 | Shroud, Rear |
| 28 | H-2101 | Adaptor |
| 29 | SS-2707 | Drain Valve |
| 30 | CAC-60 | Shoulder Bolt 3/8-16 (2 used) |
| 31 | SSF-8080-ZN | Hex Nut 3/8-16 (2 used) |
| 32 | SUDL-6-1 | Foot, Rubber Strip |
| 33 | 91895680 | Screw, 1/4 - 20 X .75 (2 used) |
| 34 | AC-0564 | Handle |
| 35 | SSF-1001-1 | Screw, 10-32 (2 used) |
| 36 | SSP-7811 | Nut/Sleeve Assembly 1/4" (2 used) |
| 37 | CAC-1392 | Strain Relief |
| 38 | SSF-556 | Screw, #10 - 32x1 Hex Head |
| 39 | SSF-981 | Screw, Hex (4 used) |
| 40 | CAC-4313 | Wheel 10" (2 used) |

NOT ILLUSTRATED

DAC-161 Shim (FC5530)

F5530 / FC5530 (cont'd)



F5530 / FC5530 (cont'd)

| <u>KEY NO.</u> | <u>PART NUMBER</u> | <u>DESCRIPTION</u> |
|-------------------------------|--------------------|--|
| + 50 | --- | Air filter fastener (2 used) |
| + 51 | DAC-143 | Air filter |
| + 52 | --- | Muffler screen |
| + 53 | --- | Intake muffler |
| 54 | AC-0037 | Head |
| 56 | SSF-927 | Screw 1/4-20 x 1 1/4" (4 used) |
| * ✓ 57 | ACG-45 | O-Ring |
| 58 | AC-0032 | Valve plate assembly (includes valves, restrictors & screws) |
| * ✓ 59 | SSG-8156 | O-Ring |
| * 60 | --- | Connecting rod assembly |
| * ✓ 61 | --- | Cylinder sleeve (position locating mark toward motor) |
| 62 | M0-9086-1 | Motor |
| 65 | AC-0140 | Eccentric Flywheel Bearing Assy. |
| 66 | SSF-615 | Screw 1/4-20 UNC-2A |
| 67 | AC-0108 | Fan |
| 69 | SSF-586 | Screw 1/4-20 UNC x .75" |
| * ✓ 70 | SSF-3158-1 | Screw 10-24 X .75" T25 Torx |
| * 71 | --- | Connecting Rod Cap |
| * ✓ 72 | --- | Compression Ring |
| <u>NOT ILLUSTRATED</u> | | |
| | MG2-OFTANK-4A | General Manual |
| | MP2-F5530A | Parts Manual |

+ KK-4981 (also includes Key Nos. 50, 51, 52, 53)

* KK-4835 piston/cylinder kit (also includes Key Nos. 57, 59, 60, 61, 70, 71, 72)

✓ K-0058 cylinder sleeve/compression ring kit (also includes 57, 59, 61, 70, 72)