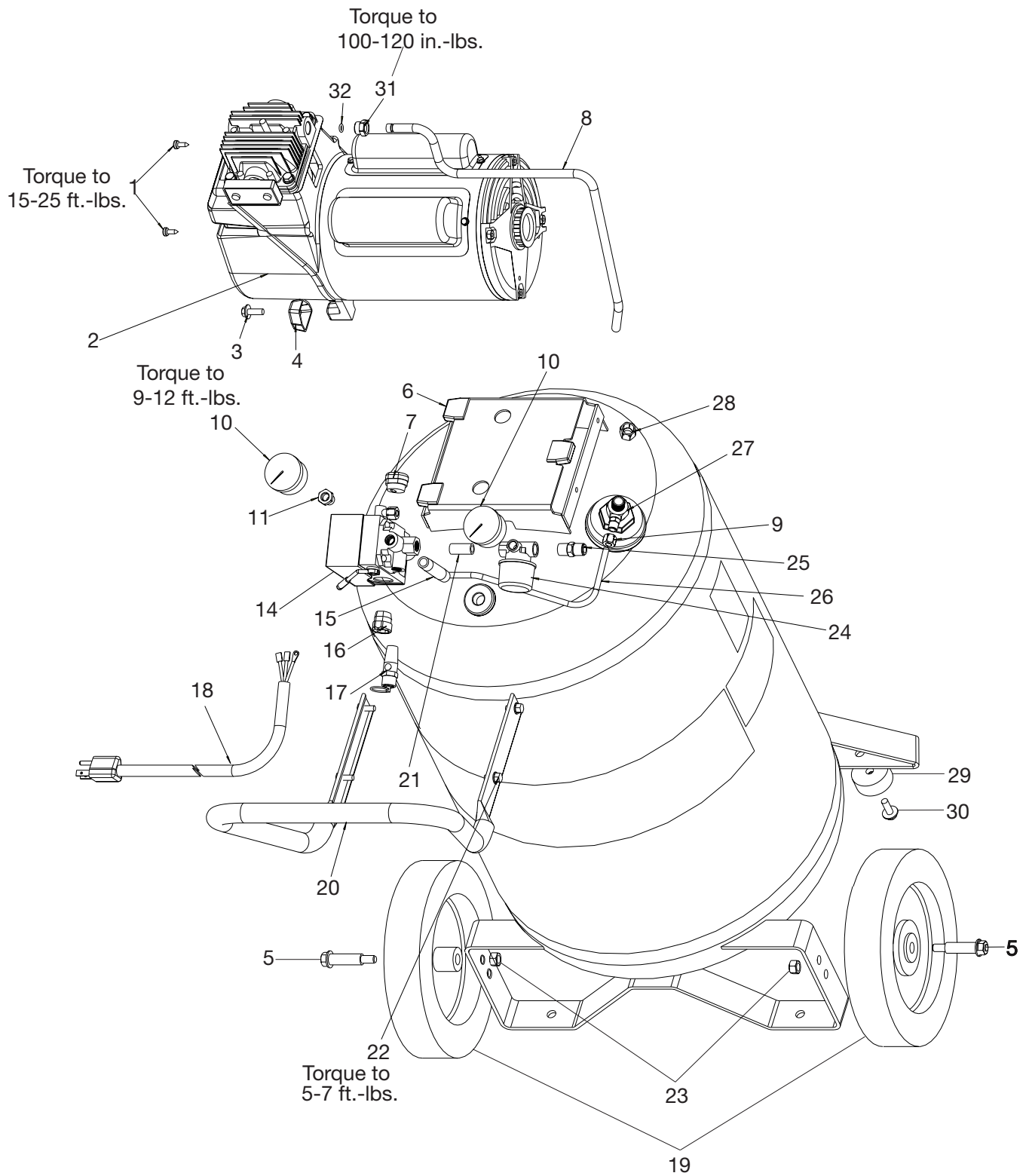


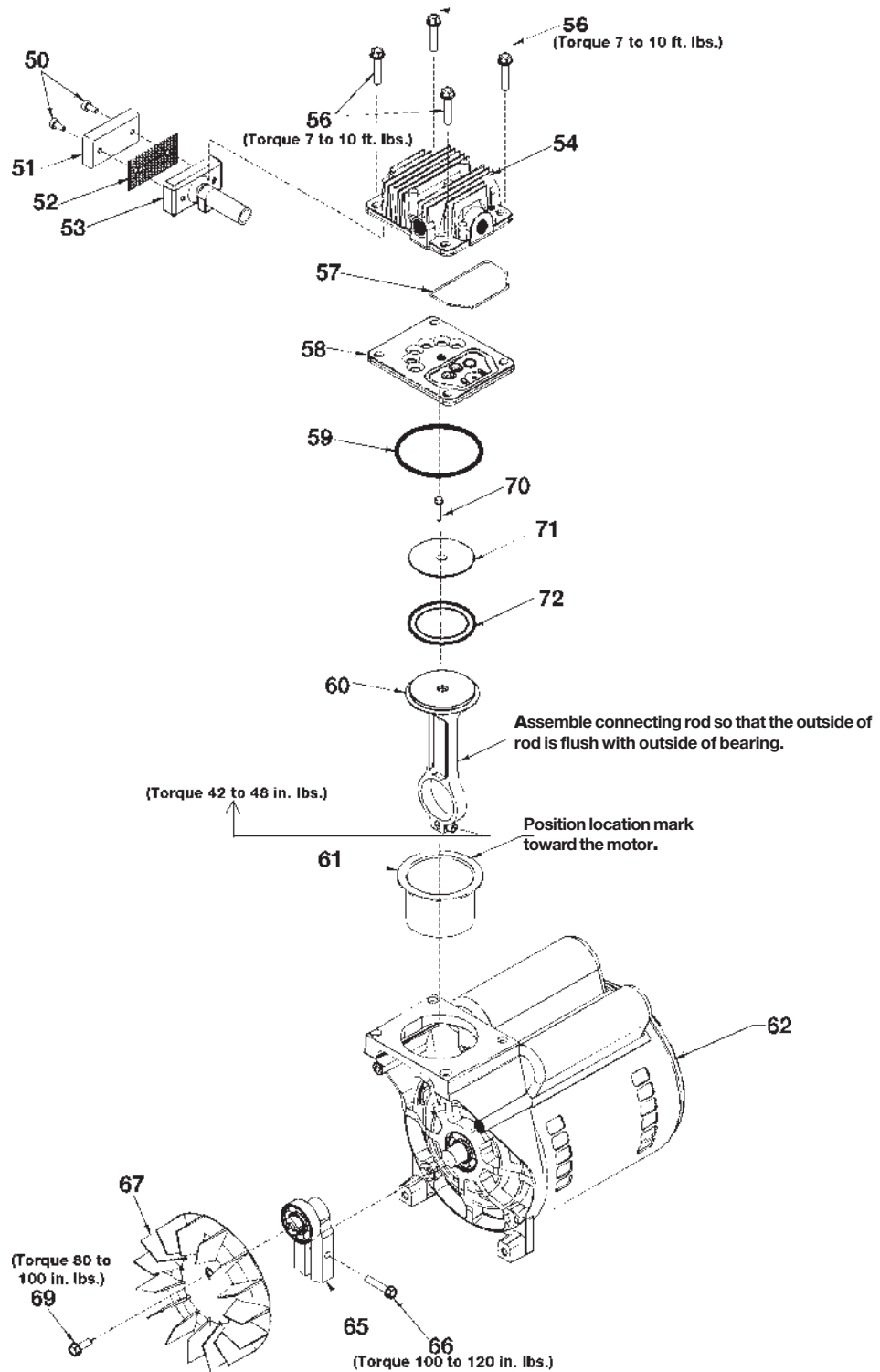
# FB5520VP



# FB5520VP (cont'd)

| <b>KEY<br/>NO.</b> | <b><u>PART NUMBER</u></b> | <b><u>DESCRIPTION</u></b>     |
|--------------------|---------------------------|-------------------------------|
| 1                  | ACG-408                   | Fastener Assembly (2 used)    |
| 2                  | AC-0376                   | Mini Shroud                   |
| 3                  | 91895680                  | Screw, 1/4-20 x .75" (2 used) |
| 4                  | ACG-18                    | Cup, Saddle Mount (2 used)    |
| 5                  | CAC-60                    | Shoulder Bolt (2 used)        |
| 6                  | AC-0716                   | Isolator (3 used)             |
| 7                  | SSW-7367                  | Bushing, Strain Relief        |
| 8                  | AC-0605-1                 | Outlet Tube                   |
| 9                  | SSP-7811                  | Nut/Sleeve Assembly 1/4"      |
| 10                 | GA-369                    | Gauge (2 used)                |
| 11                 | SSP-6021                  | Reducer Bushing (1/8-1/4NPT)  |
| 14                 | D21299                    | Pressure Switch               |
| 15                 | SSP-480                   | Nipple, 1/4 x 2.5"            |
| 16                 | SSW-7385                  | Bushing, Strain Relief        |
| 17                 | TIA-4150                  | Safety Valve                  |
| 18                 | SUDL-413-2                | Cord Assembly                 |
| 19                 | AC-0014                   | Wheel - 9" (2 used)           |
| 20                 | AC-0609                   | Handle                        |
| 21                 | SS-1286                   | Nipple 1/4-18 NPT             |
| 22                 | SSF-981                   | Screw (4 used)                |
| 23                 | SF-8080-ZN                | Nut, Hex 3/8-16 (2 used)      |
| 24                 | CAC-4296-1                | Regulator                     |
| 25                 | H-2099                    | Adaptor (1/4 NPT x 1/4" NPSM) |
| 26                 | AC-0630                   | Pressure Relief Tube          |
| 27                 | AC-0631                   | Check Valve                   |
| 28                 | SSP-7813                  | Nut/Sleeve Assembly 3/8"      |
| 29                 | SST-107                   | Rubber Bumper (2 used)        |
| 30                 | SSF-630                   | Bumper Screw (2 used)         |
| 31                 | SSP-7821-1                | Tube Nut                      |
| 32                 | SSG-3105                  | O-Ring                        |
|                    | <b><u>NOT SHOWN</u></b>   |                               |
|                    | SS-2707                   | Drain Valve                   |
|                    | SSP-485-1                 | Manifold Reducer              |

# FB5520VP (cont'd)



# FB5520VP (cont'd)

| <b>KEY</b> | <b>NO.</b> | <b>PART NUMBER</b> | <b>DESCRIPTION</b>   |
|------------|------------|--------------------|--|
| +          | 50         | ---                | Air filter fastener (2 used)                                 |
| +          | 51         | DAC-143            | Air filter   |
| +          | 52         | ---                | Muffler screen   |
| +          | 53         | ---                | Intake muffler   |
|            | 54         | AC-0037            | Head   |
|            | 56         | SSF-927            | Screw 1/4-20 x 1 1/4" (4 used)                               |
| *✓         | 57         | ACG-45             | O-Ring   |
|            | 58         | AC-0032            | Valve plate assembly (includes valves, restrictors & screws) |
| *✓         | 59         | SSG-8156           | O-ring   |
| *          | 60         | ---                | Connecting rod assembly                                      |
| *✓         | 61         | ---                | Cylinder sleeve (position locating mark toward motor)        |
|            | 62         | M0-9086-1          | Motor  |
|            | 65         | AC-0140            | Eccentric Flywheel Bearing Assy.                             |
|            | 66         | SSF-615            | Screw (1/4-20 unc-2A)  |
|            | 67         | AC-0108            | Fan  |
|            | 69         | SSF-586            | Screw (1/4-20 unc x .75)                                     |
| *✓         | 70         | SSF-3158-1         | Screw 10-24 X .75 T25 Torx                                   |
| *          | 71         | ---                | Connecting Rod Cap   |
| *✓         | 72         | ---                | Compression Ring   |

## **NOT ILLUSTRATED**

MG2-OFTANK-4A Owners Manual  
MP2-FB5520VP Parts Manual

- + KK-4981 (also includes Key Nos. 50, 51, 52, 53)
- \* KK-4835 piston/cylinder kit (also includes Key Nos. 57, 59, 60, 61, 70, 71, 72)
- ✓ K-0058 cylinder sleeve/compression ring kit (also includes 57, 59, 61, 70, 72)