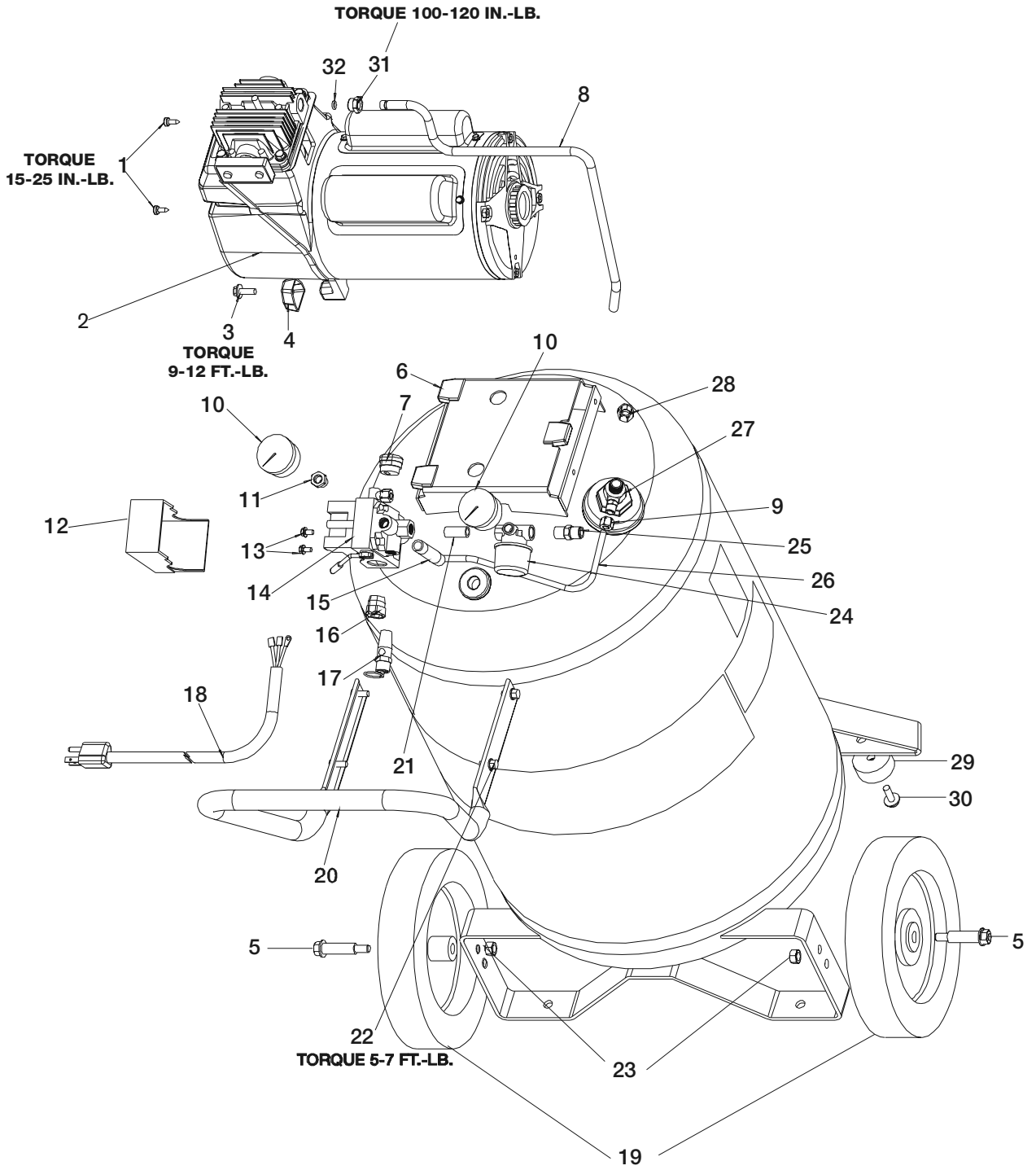


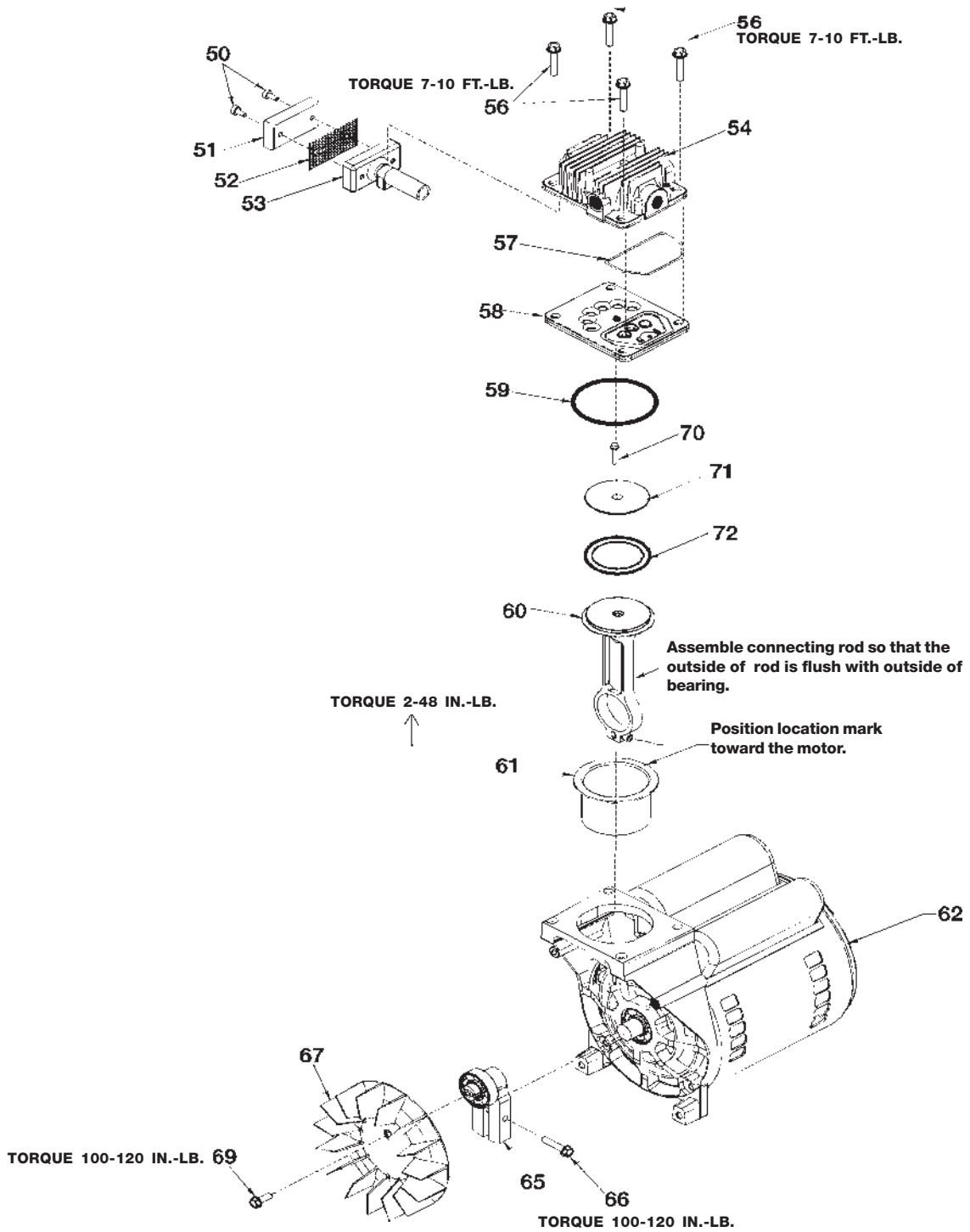
FBC5520VP



FBC5520VP (cont'd)

KEY NO.	<u>PART NUMBER</u>	<u>DESCRIPTION</u>
1	ACG-408	Fastener Assembly (2 used)
2	AC-0376	Mini Shroud
3	91895680	Screw, 1/4-20 x .75" (2 used)
4	ACG-18	Cup, Saddle Mount (2 used)
5	CAC-60	Shoulder Bolt (2 used)
6	AC-0716	Isolator (3 used)
7	SSW-7367	Bushing, Strain Relief
8	AC-0605-1	Outlet Tube
9	SSP-7811	Nut/Sleeve Assembly 1/4"
10	GA-369	Gauge (2 used)
11	SSP-6021	Reducer Bushing (1/8-1/4NPT)
12	-----	(Order Key #14)
13	SSF-1001-1	Ground Screw (2 used)
14	AC-0746	Pressure Switch Assembly
15	SSP-480	Nipple, 1/4 x 2.5"
16	SSW-7385	Bushing, Strain Relief
17	TIA-4150	Safety Valve
18	SUDL-413-2	Cord Assembly
19	AC-0014	Wheel - 9" (2 used)
20	AC-0609	Handle
21	SS-1286	Nipple 1/4-18 NPT
22	SSF-981	Screw (4 used)
23	SSF-8080-ZN	Nut, Hex 3/8-16 (2 used)
24	CAC-4296-1	Regulator
25	H-2099	Adaptor (1/4 NPT x 1/4 NPSM)
26	AC-0630	Pressure Relief Tube
27	AC-0631	Check Valve
28	SSP-7813	Nut/Sleeve Assembly 3/8"
29	SST-107	Rubber Bumper (2 used)
30	SSF-630	Bumper Screw (2 used)
31	SSP-7821-1	Tube Nut
32	SSG-3105	O-Ring
	<u>NOT SHOWN</u>	
	SS-2707	Drain Valve
	SSP-485-1	Manifold Reducer

FBC5520VP (cont'd)



FBC5520VP (cont'd)

<u>KEY</u>	<u>NO.</u>	<u>PART NUMBER</u>	<u>DESCRIPTION</u>
+	50	---	Air filter fastener (2 used)
+	51	DAC-143	Air filter
+	52	---	Muffler screen
+	53	---	Intake muffler
	54	AC-0037	Head
	56	SSF-927	Screw 1/4-20 x 1-1/4" (4 used)
* ✓	57	ACG-45	O-Ring
	58	AC-0032	Valve plate assembly (includes valves, restrictors & screws)
* ✓	59	SSG-8156	O-Ring
*	60	---	Connecting rod assembly
* ✓	61	---	Cylinder sleeve (position locating mark toward motor)
	62	M0-9086-1	Motor
	65	AC-0140	Eccentric Flywheel Bearing Assy.
	66	SSF-615	Screw 1/4-20 UNC-2A
	67	AC-0108	Fan
	69	SSF-586	Screw 1/4-20 UNC x .75"
* ✓	70	SSF-3158-1	Screw 10-24 X .75" T25 Torx
*	71	---	Connecting Rod Cap
* ✓	72	---	Compression Ring

NOT ILLUSTRATED

MG2-OFTANK-4A	Owners Manual
MP2-FB5521VP	Parts Manual

NOT ILLUSTRATED

- + KK-4981 (also includes Key Nos. 50, 51, 52, 53)
- * KK-4835 piston/cylinder kit (also includes Key Nos. 57, 59, 60, 61, 70, 71, 72)
- ✓ K-0058 cylinder sleeve/compression ring kit (also includes 57, 59, 61, 70, 72)