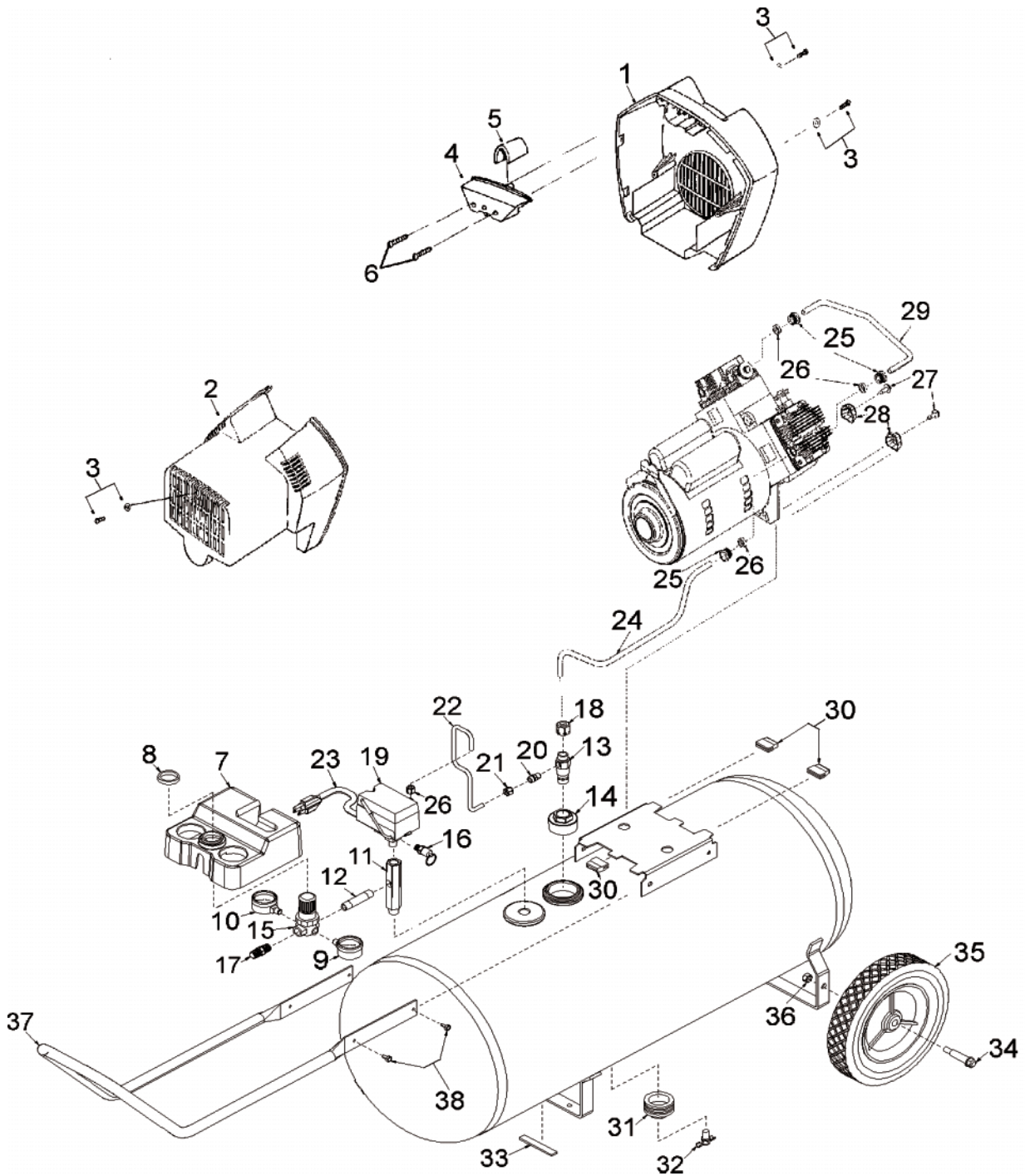


FTV630 FCTV630



FTV630

FCTV630 (cont'd)

<u>KEY NO.</u>	<u>PART NUMBER</u>	<u>DESCRIPTION</u>
1	DAC-243	Shroud, Rear
2	DAC-244	Shroud, Front
3	ACG-408	Fastener Assembly (3 used: Torque 33-38 in.-lbs.)
4	ACG-13	Cover, Intake Muffler
5	ACG-12	Filter Element
6	SSF-554	Screw, #10-14 x 2.5 Pan Head (2 used)
7	AC-0011	Console, Cover
8	CAC-61	Ring, Panel Mounting
9	AC-0009	Gaugle, RT Hand
10	AC-0010	Gauge, LT Hand
11	AC-0027-1	Manifold
12	SSP-480	Nipple, 1/4 x 2.5"
13	CAC-4290-3	Check Valve
14	SSP-485	Reducer
15	AC-0007	Regulator
16	97503734	Safety Valve
17	H-2101	Adaptor
18	SSP-7813	Nut/Sleeve Assy.
19	AC-0008-2	Pressure Switch
20	SS-8553	Connector Body
21	SSP-7811	Nut/Sleeve Assy. (2 used)
22	AC-0028	Pressure Relief Tube
23	SUDL-415-1	Cord Assembly
24	AC-0126	Outlet Tube
25	SSP-7821-1	Nut Brass Compression (3 used)
26	SSG-3105	Silicone Sleeve (3 used)
27	SSF-990	Screw, 1/4 - 2 ounce - 2A THD Forming (2 used)
28	ACG-18	Cup, Saddle Mount (2 used)
29	AC-0099	Crossover Tube
30	ACG-19	Isolator (3 used)
31	SSP-470	Hex Reducer Bushing
32	SS-2707	Drain Valve
33	SUDL-6-1	Strip, Rubber Foot
34	CAC-60	Shoulder Bolt (2 used)
35	CAC-4313	Wheel - 10" (2 used)
36	SSF-8080-ZN	Nut, Hex 3/8" (2 used)
37	AC-0002	Handle
38	SSF-981	Screw (4 used)
*39	AC-0102	Pump Assy.

NOT ILLUSTRATED

MG7-OFTWIN	General Manual
MP7-FTV630	Parts Manual