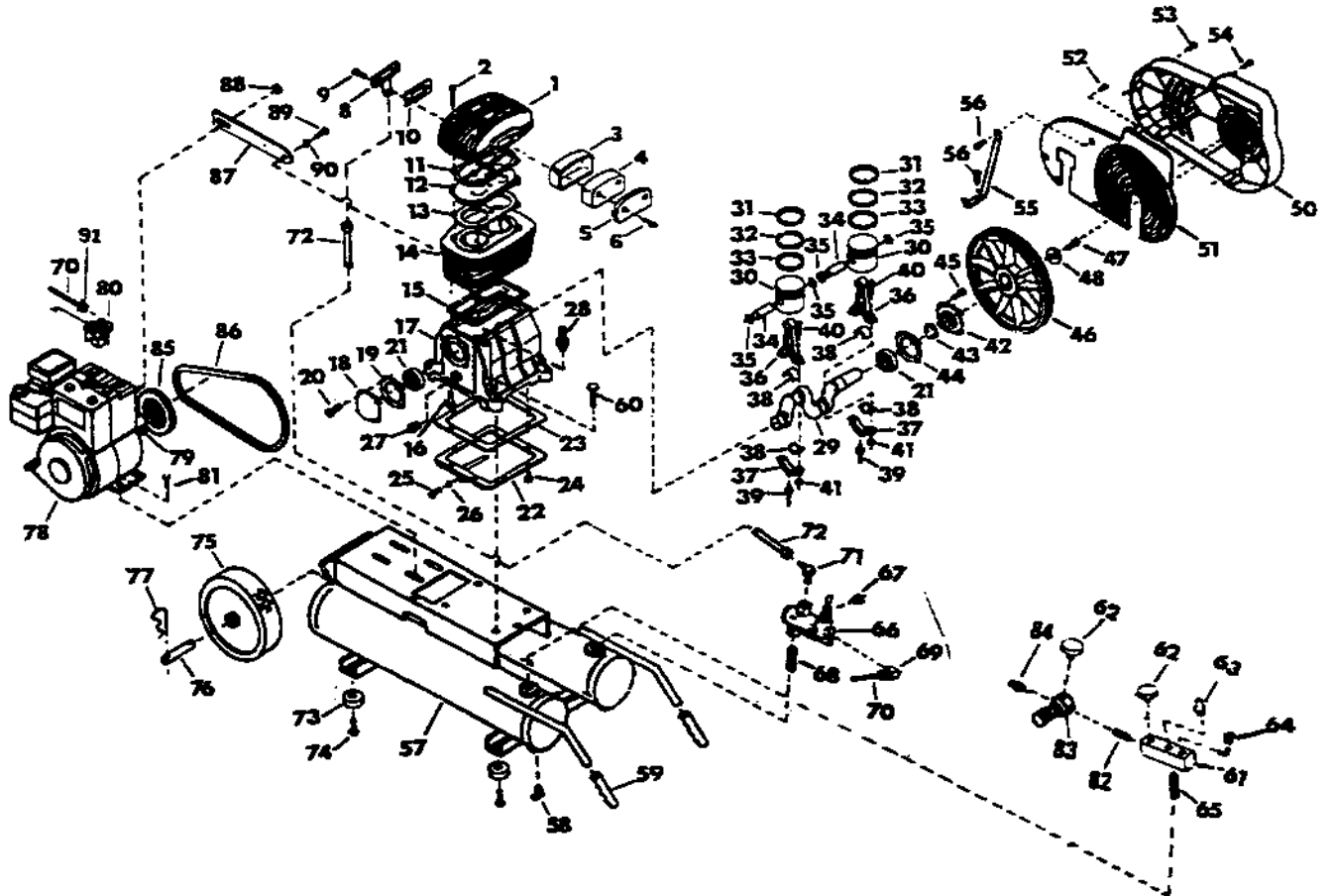


5G08D



5G08D (cont'd)

KEY NO.	DESCRIPTION	PART NUMBER	KEY NO.	DESCRIPTION	PART NUMBER
1	Head	97018048	44	Gasket, Crankshaft Cover	*
2	Screw - M6x45	*	45	Screw, M6x14	*
3	Housing, Filter	*	46	Beltwheel	97262372
4	Element, Filter	*	47	Screw Beltwheel	*
5	Cover, Filter	*	48	Washer, Beltwheel	*
6	Screw, M6x25	*	50	Beltguard, Front	*
8	Elbow, Discharge	97175822	51	Beltguard, Rear	*
9	Screw - M6x14	*	52	Capscrew, SelfTap 1/4 x 1/2	*
10	Gasket, Discharge	*	53	Screw, SelfTap 1/4 x 1	*
11	Gasket, Head - Valve Plate	*	54	Screw, SelfTap #8 x1	*
12	Valve Plate Assembly	*	55	Brace, Beltguard	*
13	Gasket, Valve Plate - Cylinder	*	56	Capscrew, Selftap 1/4 x 1/2	*
14	Cylinder	*	58	Valve, Manual Drain	97163471
15	Gasket, Cylinder - Crankcase	*	59	Grip, Handle	97171060
16	Screw, M8x20	*	61	Manifold	97272280
18	Cover, Crankshaft	*	62	Guage, Pressure	97167613
19	Gasket, Crankshaft Cover	*	63	Safety Valve	*
20	Screw - M6x14	*	64	Plug, Pipe 3/8"	SS-3222-CD
21	Bearing, Crankshaft	*	65	Nipple, Close 1/2	97171037
22	Cover, Crankcase Bottom	*	66	Valve, Pilot Unloader	97172837
23	Gasket, Crankcase Bottom Cover	*	67	Offace	91889832
24	Screw - M6x14	*	68	Nipple, Close 1/2	97171037
25	Screw, Drain M8x15	*	69	Elbow, Tube	SSP-6422
26	Seal, Drain	*	70	Throttle Control Tube	DAC-193
27	Glass, Oil Level Sight	97018055	71	Elbow Tube	95031985
28	Plug, Oil Filler	97017818	72	Tube, Discharge	91889725
29	Crankshaft	*	73	Pad, Isolator	SST-5314-1
30	Piston	*	74	Screw, SelfTap 1/4 x1	97175350
31	Ring, Piston - Tapper Face	*	75	Wheel	97167506
32	Ring, Piston - Stepped	*	76	Axle, Wheelbarrow	97168546
33	Ring, Piston - Oil Control	*	77	Cup, Wheelbarrow	97171078
	Ring, Piston - Oil Control	*	78	Engine, Gas - 5 HP (Briggs & Stratton)	91897041
34	Pin, Wrist	*	79	Key Square	95094389
35	Ring, Snap	*	80	Throttle Control Assy. (Briggs & Stratton)	CAC-432-1
36	Rod, Connecting	*	83	Regulator, Pressure	DAC-180
37	Cap, Connecting Rod	*	84	Adapter	H-2099
38	Bearing, Shell (Set of 2)	*	85	Sheave, Engine	97271902
39	Pin Dipper	*	87	Brace, Compressor Engine	97501464
40	Bolt, Connecting Rod	*	88	Nut, Whiz-lock 1/4	39128541
41	Nut, Self-Locking	*	91	Nut-Sleeve Assy.	SSP-7811
42	Cover, Crankshaft	*			
43	Oil Seal	*			