

AC-0334

KEY NO. PART NUMBER DESCRIPTION

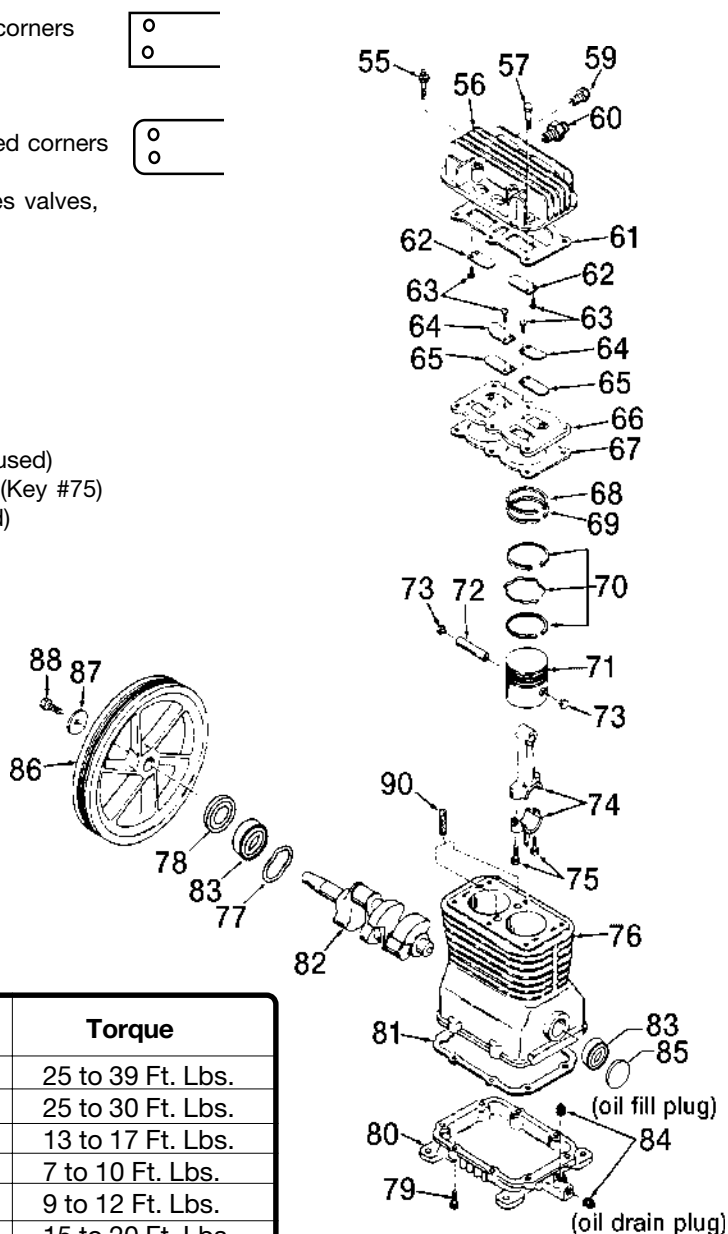
	55	SSF-6627	Stud 3/8"-16 both ends (1 used)
	56	CAC-4213	Head assembly (includes valves and screws)
	57	SSF-955	Screw, 3/8"-16 x 1 1/2" (5 used)
	59	SS-1215	Plug
	60	SSP-9401	Connector body
✓	61	CAC-291-1	Head gasket
•	62	—	Intake flapper valve - square corners (2 used on head)
•	63	—	Screw #5-40 x 1/4" (8 used)
	64	CAC-294	Restrictor plate (2 used)
•	65	—	Exhaust flapper valve - beveled corners (2 used on valve plate)
	66	DAC-4129-1	Valve plate assembly (includes valves, restrictors and screws)
✓	67	CAC-1265-2	Valve plate gasket
✗	68	—	Compression ring (2 used)
✗	69	—	Compression ring (2 used)
✗	70	—	Oil rings and expanders
	71	CAC-55-1	Piston (2 used)
	72	265-19	Piston pin (2 used)
	73	CAC-207	Piston pin plug (4 used)
	74	265-410	Connecting rod assembly (2 used) Includes (2) SSF-927 screws (Key #75)
	75	SSF-927	Screw, 1/4"-20 x 1 1/8" (4 used)
	76	AC-0205	Crankcase and cylinder
	77	SSN-1018	Wavy washer
	78	AC-0169	Oil Seal
	79	SSF-925	Screw, 1/4"-20 x 7/8" (8 used)
	80	DAC-276	Base
✓	81	265-16-1	Base gasket
	82	AC-0203	Crankshaft
	83	SST-104	Ball bearing (2 used)
	84	SSP-486	Pipe plug (2 used)
	85	SSP-505	Oil plug
	86	265-2	Flywheel
	87	SSN-1014-ZN	Belleville washer
	88	SSF-3039-ZN	Cap screw
	90	265-6	Vent filter (2 used)

NOT SHOWN

265-17	Filter
265-18	Retaining Filter
SSF-935	Screws

- ✗ Available as part of Ring Kit KK-4313.
- ✓ Available as individual parts or part of Gasket Kit K-0301.
- Available in Valve Kit KK-4275.

Key No.	Torque
55	25 to 39 Ft. Lbs.
57	25 to 30 Ft. Lbs.
63	13 to 17 Ft. Lbs.
75	7 to 10 Ft. Lbs.
79	9 to 12 Ft. Lbs.
88	15 to 20 Ft. Lbs.



Recommended Oils - One Stage Compressor Units

Use a compressor oil such as SAE 20-20W SF motor oil. (Crankcase oil capacity is 16 fluid ounces.) Under extreme winter conditions use 10 weight oil. Multiviscosity oil, 10W30, will leave carbon deposits on critical components, reducing performance and compressor life.