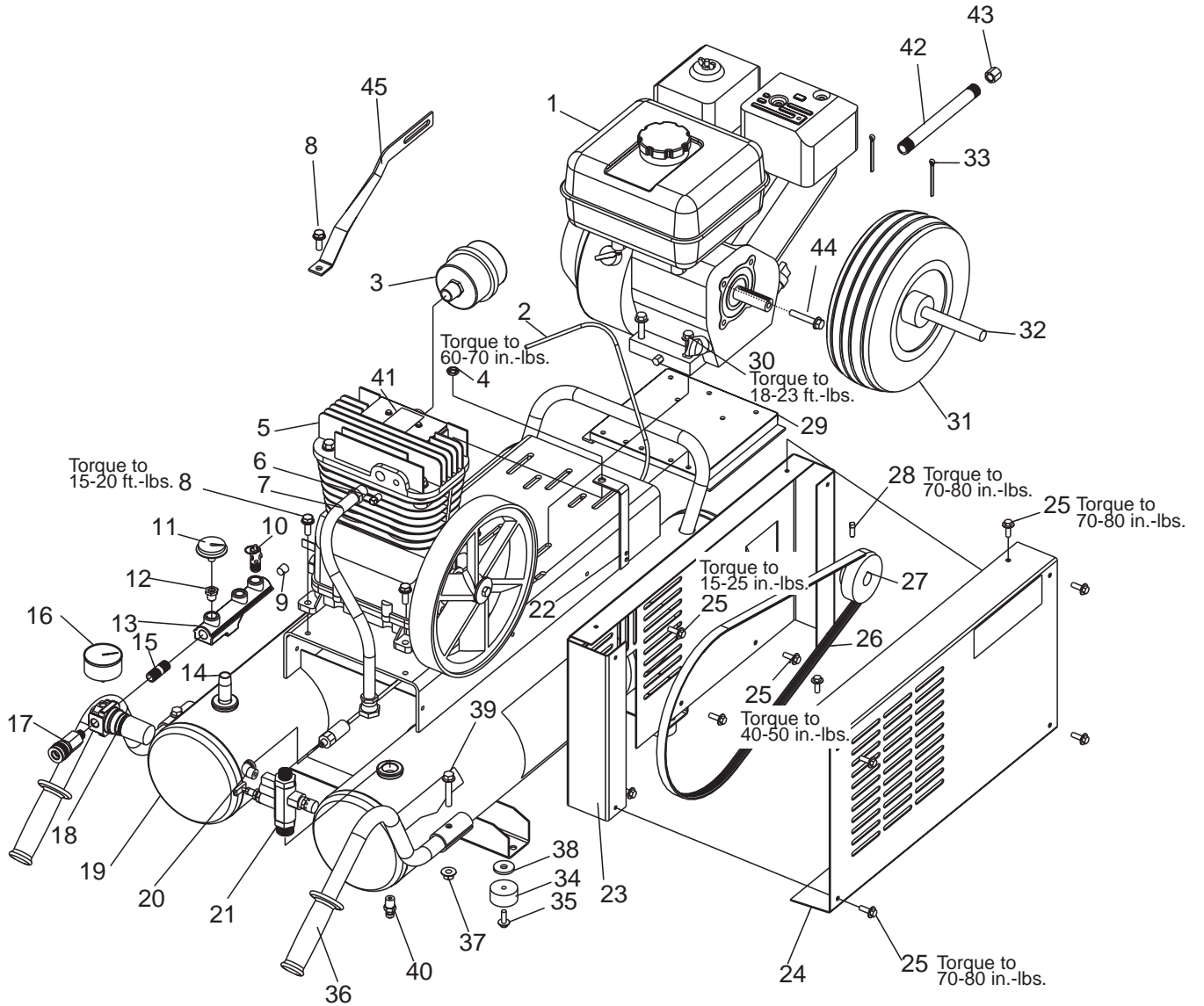


CPL55GH8W



CPL55GH8W (cont'd)

<u>No.</u>	<u>Part Number</u>	<u>Description</u>
1	* -----	Engine, Honda 5.5HP GX160
2	D21236	Throttle Control
3	AC-0330	Filter, Solberg 1/2 NPT
	AC-0331	Replacement Filter
4	SSF-8111-ZN	Nut, Lock 3/8-16
5	• Z-AC-0722	Pump Assembly
6	SS-1215	Plug, Pipe 3/8"
7	D21234	Outlet Tube
8	SSF-928	Screw, Hex Washer
9	SS-3222-CD	Pipe Plug
10	TIA-4150	Safety Valve
11	GA-366	Gauge, Tank
12	SSP-6021	Bushing Reducer 1/8-1/4NPT
13	CAC-95	Manifold
14	SS-2108	Nipple, 3/8 X 2
15	SS-2071	Nipple, 1/4-18 NPT X 1.5
16	Z-D20644	Gauge, Regulator
17	D20675	Quick Connect, 1/4NPT
18	D20698	Regulator
19	Z-D21237	Tank Assembly
20	SSP-535	Elbow, 1/8 NPT
21	D21235	Unloader Valve
22	D21434	Bracket, Belt Guard
23	D21230	Belt Guard, Inside
24	D21232	Belt Guard, Outside
25	91895680	Screw, 1/4 - 20 X .75
26	C-BT-224	Belt, V
27	Z-C-PU-2862	Motor Pulley
28	SS-391	Set Screw
29	CAC-42-1	Plate, Stiffener
30	SSF-3077	Screw, 5/16-18X1 1/2 HEX
31	AC-0673	Wheel, 10"
32	DAC-138	Axle
33	SSN-2406	Cotter Pin, 5/32X2
34	SST-108	Rubber Bumper
35	91895680	screw, 1/4-20 x .75
36	AC-0260-1	Handle Grip
37	SSF-644	Nut, Whiz Lock
38	SSW-7462	Spacer
39	SSF-643	Screw, Flanged
40	AC-0430	Drain Valve
41	LA-3108	Label, Hot Surface
42	D21656	Oil Drain Extension
43	D21657	Cap
44	SSF-611	Screw, 5/16-24 x 3/4
45	D21669	Bracket, Stiffener

Not Illustrated

D21226 Parts Manual

D21227 Operators Manual

* **Contact local engine dealer for engine repair parts**

• **See Pumps Tab**