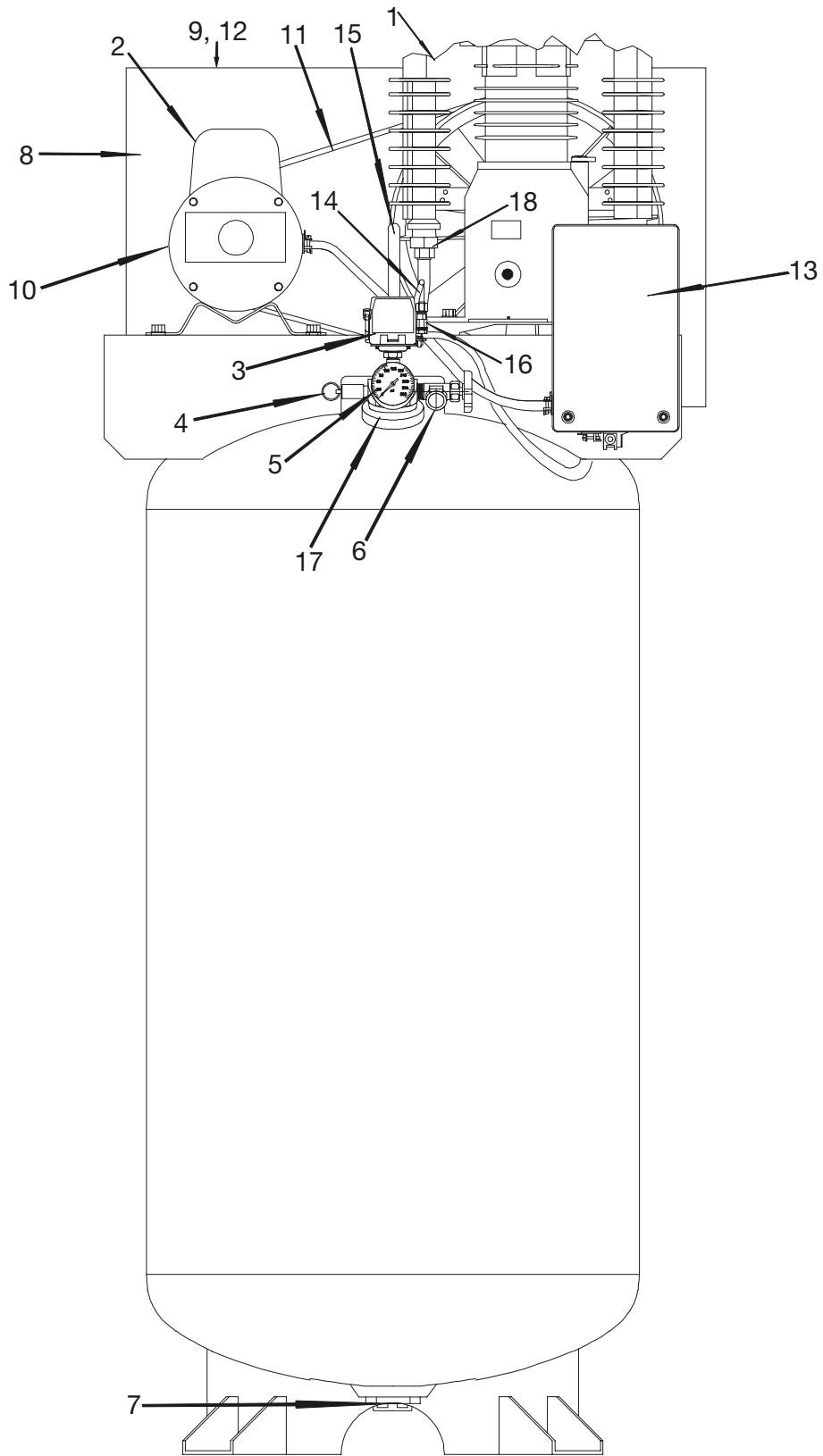


# LM7580V2M



# LM7580V2M

<b>KEY NO.</b>	<b>PARTNUMBER</b>	<b>DESCRIPTION</b>
•1	BAL-T39	PUMP ASSEMBLY
2	MO-9071	MOTOR
3	DAC-278-2	PRESSURE SWITCH
4	TIA-4200	SAFETY VALVE
5	GA-360	PRESSURE GAUGE
6	SSV-6	BALL VALVE
7	SS-2707	DRAIN VALVE
8	AC-0511	INSIDE BELTGUARD
	AC-0523	OUTSIDE BELTGUARD
9	SSF-953-ZN	BELT GUARD SCREW (2 used)
10	PU-2898	MOTOR PULLEY
11	BT-312	BELT (2 used)
12	SSF-8131	BELTGUARD NUT (2 used)
13	DAC-300-1	CONTACTOR BOX
14	DAC-304	PRESSURE RELIEF TUBE
15	AC-0517	OUTLET TUBE
16	SSP-7811	NUT/SLEEVE ASSEMBLY 1/4" (2 USED)
17	CAC-1355	MANIFOLD
18	SSP-7824	NUT/SLEEVE ASSEMBLY 5/8" (2 USED)
	<b><u>Part Not Shown</u></b>	
	DAC-252	CHECK VALVE
	AC-0467	BASE BRACKET
	AC-0485	BASE BRACKET

•See Pumps Tab