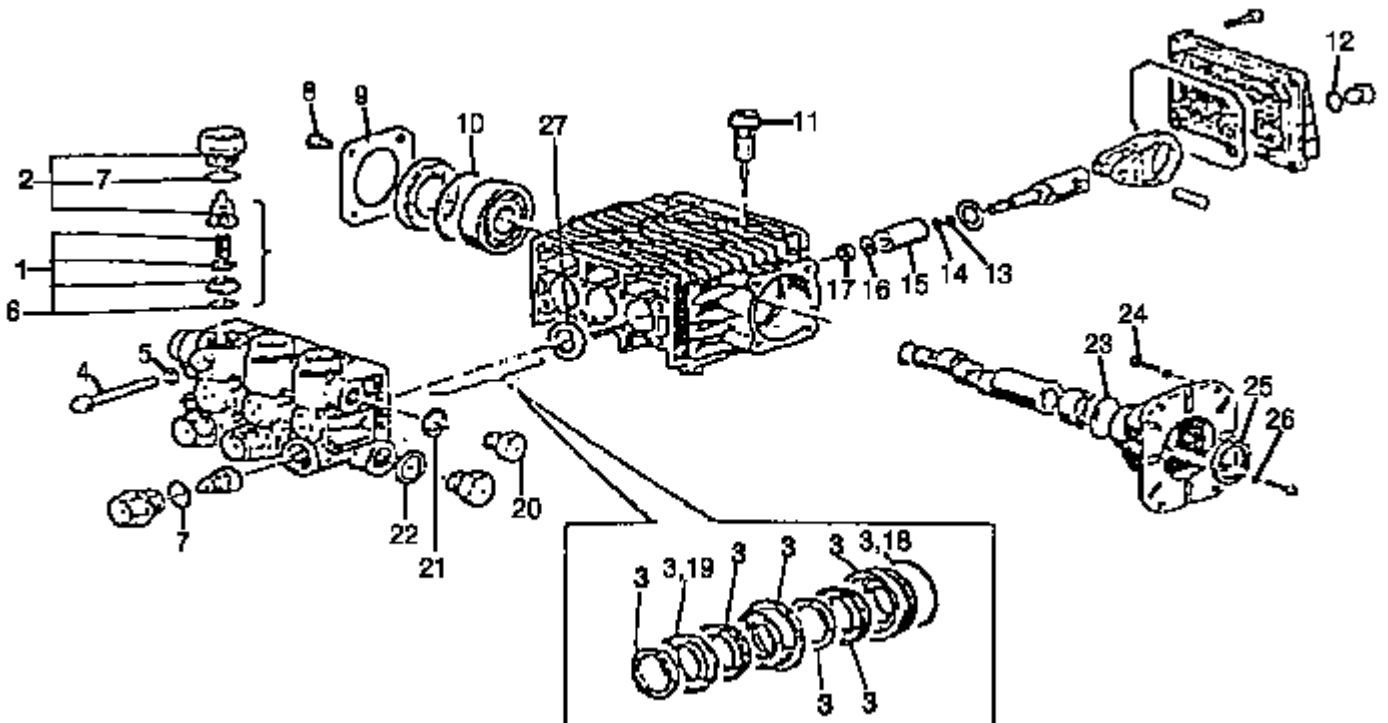


PEZ3035 - GENERAL PUMP



PEZ3035 - GENERAL PUMP PARTS LIST

<u>Key#</u>	<u>Part #</u>	<u>Description</u>
1	15607	Water Seal Kit
2	P666	Valve Cap and O-ring
3	15608	Packing
4	P319	Screw 5/16 - 18X 4
5	P313	Lock Washer
6	15705	O-ring
7	P016	O-ring
8	15713	Screw, 1/4-20 x 1/2
9	15898	Bearing Cover
10	15727	O-ring
11	15441	Dip Stick
12	P592	O-ring
13	P308	Back-up Ring
14	P305	O-ring
15	P619	Ceramic Plunger
16	P343	Brass Washer
17	15838	Plunger Nut
18	15677	O-ring
19	P062	Packing
20	15686	Manifold Plug (upper)
21	F472	Aluminum Washer
22	F473	Spacer
23	15727	O-ring
24	15672	HHSC Screw 5/16-24 x 1
	15676	Screw, 3/8-16 x1
25	16110	Oil Seal
26	P393	Lock Washer
27	P026	Oil Seal Kit

General Information:

- V096 unloader or GI-22995A
- 30w non-detergent oil - 11.2 oz.
- Fill to center of sight glass
- PK is used on 16856 and PEZ3035 General pumps, the kits contains: F035 quick connect, 15913 hose, S065 clamps (2), H100 chemical hose, M036 key, 16506 thermal relief valve, 16776 easy start valve, F107 lockwasher, 3/8" (E to P), 15282 screw 3/8" (E to P), 15124 chemical injector, 17098 in-line filter.

PEZ3035 - GENERAL PUMP REPAIR KIT

15607 Valve and Oil Seal Kit

