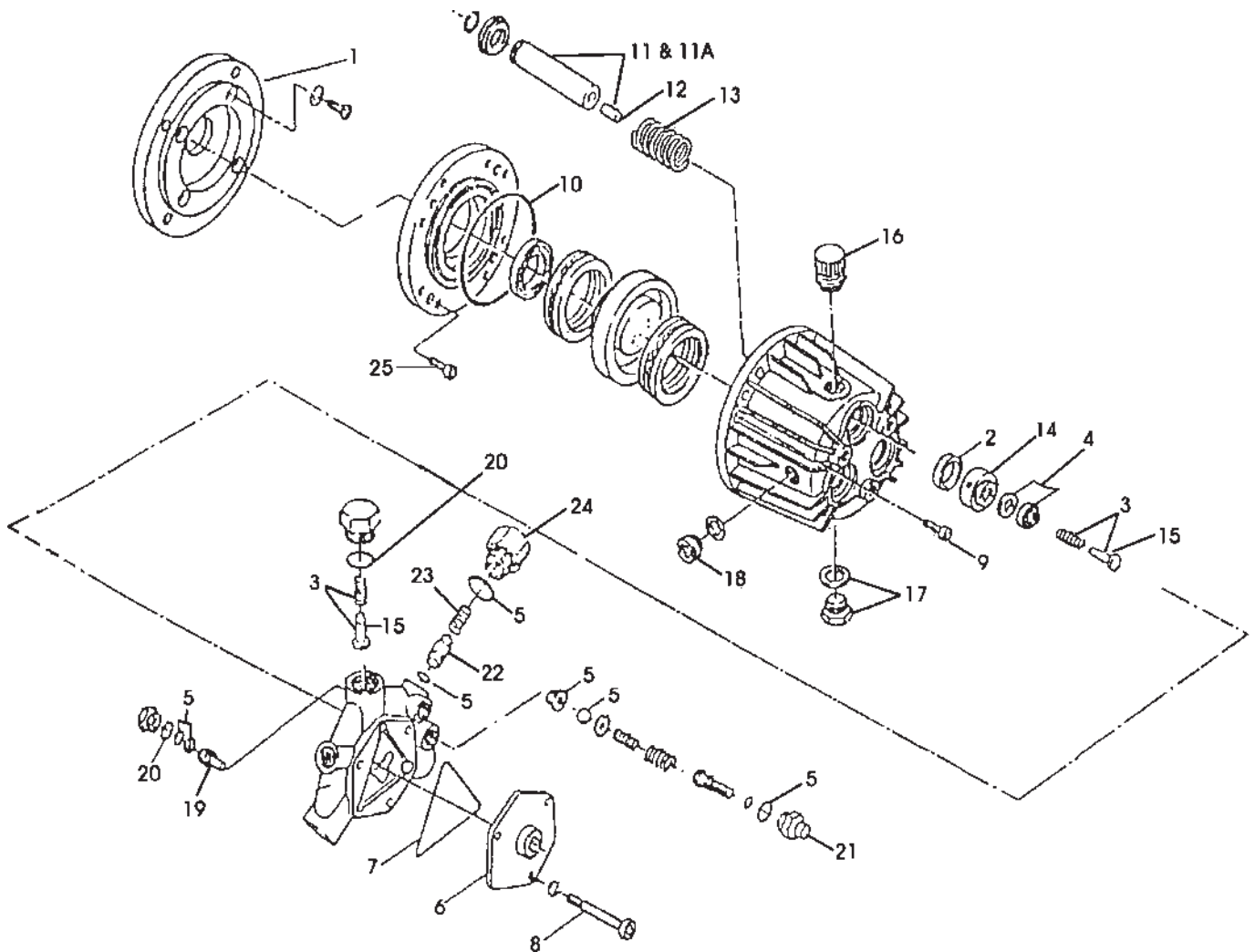
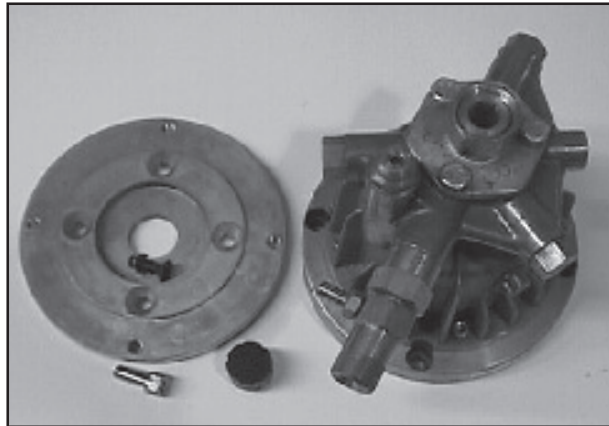


# PKHRC30 - 15033 - GIANT

When ordering a replacement pump order PKXMV3G25-A



# PKHRC30 - 15033 - GIANT PUMP PARTS LIST

<u>Key#</u>	<u>Part #</u>	<u>Description</u>
1	PHR20AP	Adapter Plate
2	P781	Oil Kit
3	P783	Valve Kit
4	P782	Water/Packing Kit
5	P784	Unloader Kit
6	P785	Suction Flange
7	P786	O-ring (Formed)
8	G106228	Stud Bolts (3)
9	15894	Socket Head Cap Screw 1/4"
10	16253	O-ring
11	15572	Plunger Assy.
11A	16154	Plunger Kit, Ceramic
12	16151	Insert, Plunger
13	16155	Plunger Spring
14	16232	Spacer Ring
15	15461	Valve Cone
16	15458	Oil Fill Cap
17	G108185	Oil Drain Plug
18	16076	Sight Glass (optional)
19	15467	Piston
20	15465	O-ring
21	15464	Adjusting Plug
22	P814	Kick Back Valve Cone
23	P217	Kick Back Valve Spring
24	15462	Kick Back Valve Spring Retainer
25	15184	Bolt (Pump to Adapter)

### **General Information:**

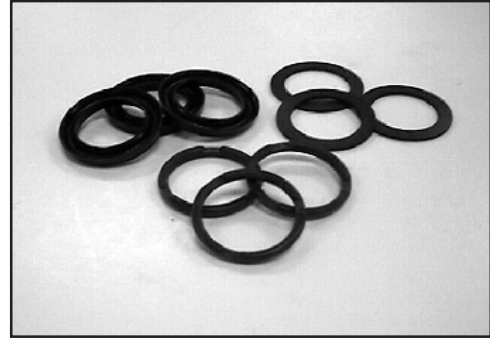
- 15125 Chemical Injector (not shown)
- P806 Complete Manifold Kit (not shown)
- Garden hose connectors- Male Adapter 15127, nut H061
- High pressure connector – H121
- PK is used for HRC30-15033 pumps-Pump Kit contains:  
15033 pump, 15127 swivel, H061 swivel nut, 15125 Chemical Injector, H140 Chemical Hose, F187 Inline screen, P448 Key, 15184 Screw (qty 4, pump to adapter), P808 Screw (qty 4, adapter to engine), P809 Lock Washer (qty 4, adapter to engine), PHR20AP Adapter Plate

# PKHRC30 - 15033 - GIANT PUMP REPAIR KIT

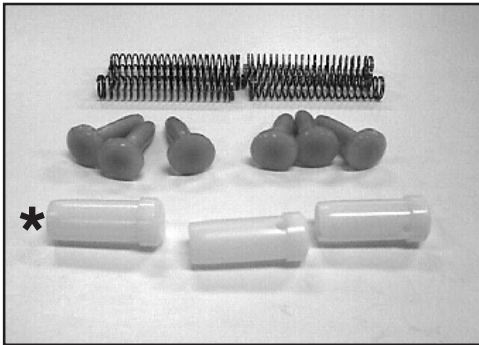
**P781 Oil Seal Kit**



**P782 Water Seal Kit**



**P783 Valve Kit**



**P784 Unloader Kit**



**\* Only use the sleeves if the insert (Key #12) is damaged. Do not use the valve cones when using the sleeves.**